

**12INCH 3-MODE
MONOCHROME
MONITOR**

**MODEL : MD-1252Y
MY2521
MY2523
MY2525
V252A
V252G**





CONTENTS

| | |
|---|-------|
| 1. SAFETY PRECAUTION | 3 |
| 2. GENERAL INFORMATION..... | 4~6 |
| 3. SIGNAL TIMING CHART | 7 |
| 4. ADJUSTMENT | 8~9 |
| 5. BLOCK DIAGRAM | 10 |
| 6. P.C BOARD DIAGRAM..... (PARTS SIDE) | 11 |
| 7. P.C BOARD DIAGRAM..... (FOIL SIDE) | 12 |
| 8. TROUBLE SHOOTING | 13~20 |
| 9. SCHEMATIC DIAGRAM..... | 21~22 |
| 10. EXPLODED VIEW | 23~34 |
| 11. REPAIR PARTS LISTS | 35~40 |

1. SAFETY PRECAUTION

1. The design of this product contains special hardware, many circuits and components specially for safety purposes. For continued protection, no changes should be made to the original design unless authorized in writing by the manufacturer. Replacement parts must be identical to those used in the original circuits. Service should be performed by qualified personnel only.
2. Alterations of the design or circuitry of monitor should not be made. Any design alterations or additions will void the manufacturer's warranty and will further relieve the manufacturer of responsibility for personal injury or property damage resulting therefrom.
3. Many electrical and mechanical parts in monitor sets have special safety-related characteristics. These characteristics are often not evident from visual inspection nor can the protection afforded by them necessarily be obtained by using replacement components rated for higher voltage. Wattage, etc. Replacement parts which have these special safety characteristics are identified in the parts list of Service manual. Electrical components having such features are identified by shading on the schematics and by (▲) on the parts list in Service manual. The use of a substitute replacement which does not have the same safety characteristics as the recommended replacement part shown in the parts list in Service manual may create shock, fire, or other hazards.
4. If any repair has been made to the chassis, it is recommended that the B+ setting should be checked or adjusted (See ADJUSTMENT OF B+ POWER SUPPLY.)
5. The high voltage applied to the picture tube must conform with that specified in Service manual. Excessive high voltage can cause an increase in X-Ray emission, arcing and possible component damage, therefore operation under excessive high voltage conditions should be kept to a minimum, or should be prevented. If severe arcing occurs, remove the AC power immediately and determine the cause by visual inspection (incorrect installation, cracked or melted high voltage harness, poor soldering, etc.). To maintain the proper minimum level of soft X-Ray emission, components in the high voltage circuitry including the picture tube must be the exact replacements or alternatives approved by the manufacturer of the complete product.
6. Do not check high voltage by drawing an arc. Use a high voltage meter or a high voltage probe with a VTVM. Discharge the picture tube before attempting meter connection, by connecting a clip lead to the ground frame and connecting the other end of the lead through a 10k Ω 2W resistor to the anode button.
7. When service is required, observe the original lead dress. Extra precaution should be given to assure correct lead dress in the high voltage circuit area. Where a short circuit has occurred, those components that indicate evidence of overheating should be replaced. Always use the manufacturer's replacement components.
8. ISOLATION CHECK
(SAFETY FOR ELECTRICAL SHOCK HAZARD)

After re-assembling the product, always perform an isolation check on the exposed metal parts of the cabinet (metal cabinet, screwheads, control shafts, etc.) to be sure the product is safe to operate without danger of electrical shock.

(1) DIELECTRIC STRENGTH TEST

The isolation between the AC primary circuit and all metal parts exposed to the user, Particularly any exposed metal part having a return path to the chassis should withstand a voltage of 1,100V (3,000V AC when power input is 220V AC and over) AC (r.m.s.) for a period of one second.

... Withstand a voltage of 1,100V AC (r.m.s.) to an appliance rated up to 120V, and 3,000V AC (r.m.s.) to an appliance rated 200V or more, for a period of one second.

This method of test requires a test equipment not generally found in the service trade.

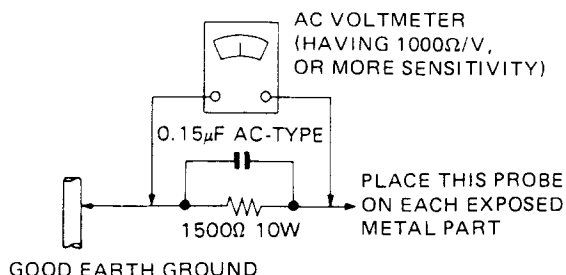
(2) LEAKAGE CURRENT CHECK

Plug the AC line cord directly into the AC outlet (do not use a line isolation transformer during this check.) Using a "Leakage Current Tester", measure the leakage current from each exposed metal part of the cabinet, particularly any exposed metal part having a return path to the chassis, to a known good earth ground (water pipe, etc.). Any leakage current must not exceed 0.5mA AC (r.m.s.).

• ALTERNATE CHECK METHOD

Plug the AC line cord directly into the AC outlet (do not use a line isolation transformer during this check.) Use an AC voltmeter having 1,000 ohms per volt or more sensitivity in the following manner. Connect a 1500 Ω 10W resistor paralleled by a 0.15 μ F AC-type capacitor between an exposed metal part and a known good earth ground (water pipe, etc.). Measure the AC voltage across the resistor with the AC voltmeter.

Move the resistor connection to each exposed metal part particularly any exposed metal part having a return path to the chassis, and measure the AC voltage across the resistor. Now, reverse the plug in the AC outlet and repeat each measurement. Any voltage measured must not exceed 0.35V AC (r.m.s.). This corresponds to 0.5mA AC (r.m.s.).

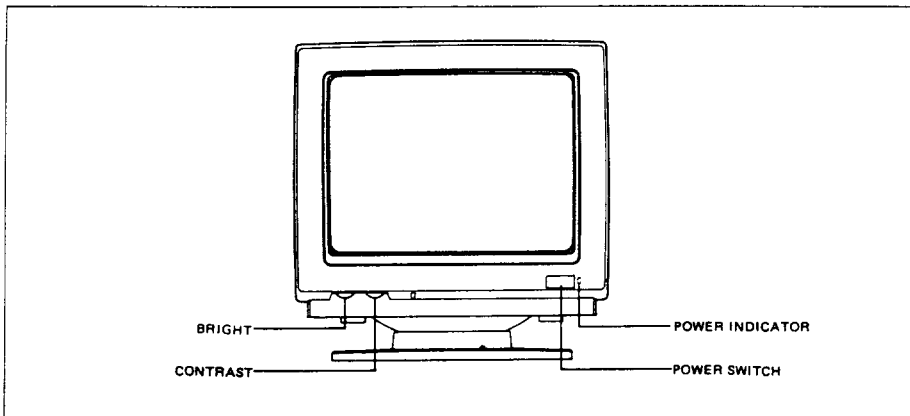


2. GENERAL INFORMATION

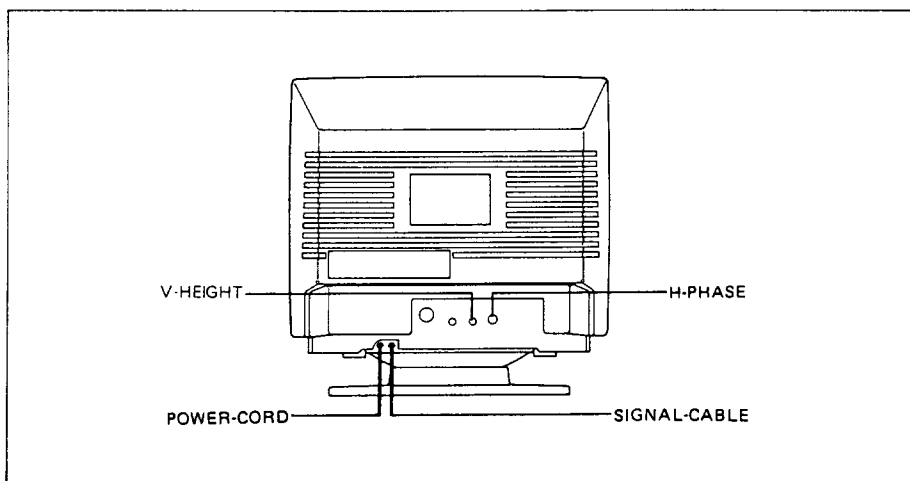
2-1. MONITOR DESCRIPTION

- 2-1-1. Tri-mode monitor is designed for clean and sharp image displays at C.G.A (Color graphic adapter)/M.D.A (Mono display adapter)/E.G.A (Enhanced graphic adapter) modes available with your personal computer.
- 2-1-2. Tri-mode monitor automatically changes the correct operating mode based upon the input sync-polarity and frequency from the PC.

2-2. OPERATING FUNCTION



- 2-2-1. Brightness control : Rotate to adjust the brightness to your comfortable level
- 2-2-2. Contrast : Rotate to adjust the contrast to your comfortable level
- 2-2-3. Power switch and power indicator : Push the power switch once. The green indicator light will be lit when the monitor power is on.
Push the power switch again then monitor power is off.



- 2-2-4. Vertical height : Adjust the height of the picture
- 2-2-5. Horizontal phase : Adjust horizontal position of the picture.

2-3. SPECIFICATION

2-3-1. AC POWER INPUT :

AC 120 V \pm 10 % / 60Hz / 45 W : For North American Version

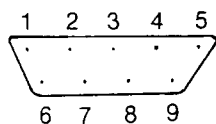
AC 220 V \pm 10 % / 50Hz / 45 W : For European Version

AC 240 V \pm 10 % / 50Hz / 45 W : For U.K./Australian Version

2-3-2. SIGNAL INPUT

Input level : 3.5V \pm 1.0 V_{p-p} separate TTL

CONNECTOR : 9-PIN D-SUB TYPE



Pin connection

| Pin No. | CGA | EGA | MDA/HGC |
|---------|-----------------|-----------------|-----------------|
| 1 | Ground | Ground | Ground |
| 2 | N/A | 2nd-Red | N/A |
| 3 | Red | 1st-Red | N/A |
| 4 | Green | 1st-Green | N/A |
| 5 | Blue | 1st-Blue | N/A |
| 6 | Intensity | 2nd-Green | Intensity |
| 7 | N/A | 2nd-Blue | Video |
| 8 | Horizontal-sync | Horizontal-sync | Horizontal-sync |
| 9 | Vertical-sync | Vertical-sync | Vertical-sync |

2-3-3. VIDEO OUTPUT

Bandwidth : 20 Mhz at - 3dB

Resolution :

- mode 1(C.G.A) = 640 dots \times 200 lines 16 Level
- mode 2(E.G.A) = 640 dots \times 350 lines 64 Level
- mode 3(M.D.A) = 720 dots \times 350 lines Dual intensity

2-3-4. DISPLAY SIZE

Horizontal : 205 MM \pm 3 MM

Vertical : 154 MM \pm 3 MM

2-3-5. Linearity

Horizontal : \pm 10 %

Vertical : \pm 10 %

2-3-6. TILT
 ± 1.0 degree

2-3-7. Geometric distortion
 ± 2 MM at center

2-3-8. Retrace time

| | | C G A | E G A | M D A |
|-------|--------------|-------------|-------------|-------------|
| HORIZ | RETRACE-TIME | 5.4 μ S | 5.2 μ S | 5.2 μ S |
| VERT | RETRACE-TIME | 370 μ S | 250 μ S | 250 μ S |

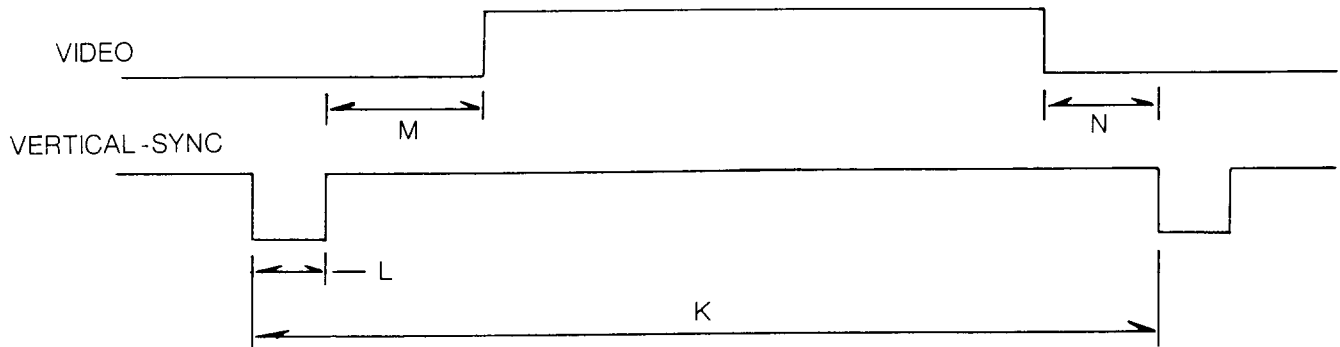
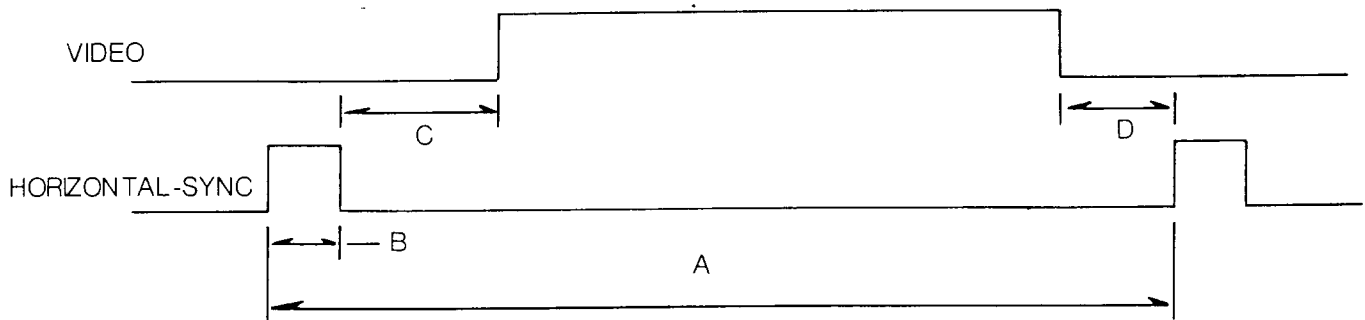
2-3-9. HOLD FREQUENCY RANGE
 Horizontal : 15.5 KHz - 24 KHz
 Vertical : 47 Hz - 62 Hz

2-3-10. CRT CHARACTERISTICS
 Size : 12 inch diagonal
 Deflection angle : 90 degree
 Implosion protection : shrinkage band with mounting lug

Face : Direct etched (Non-glare)
 Anode voltage : 13 Kv ± 1 Kv at 0 beam of each mode

| Phosphor | Green | Amber | White |
|----------|-----------|--------|--------|
| Model | MD-1252 Y | | |
| | MY2523 | MY2525 | MY2521 |
| | V252G | V252A | |

3. SIGNAL TIMING CHART



| PARAMETER | VIDEO MODES FOR XT/AT PC | | |
|-----------------|--------------------------|-----------------|-----------------|
| | C G A | E G A | M D A |
| A | 63.5 μ SEC | 45.76 μ SEC | 54.25 μ SEC |
| B | 4.5 μ SEC | 4.95 μ SEC | 8.9 μ SEC |
| C | 7.8 μ SEC | 1.6 μ SEC | 0.55 μ SEC |
| D | 6.7 μ SEC | -0.15 μ SEC | 0.55 μ SEC |
| H-SYNC POLARITY | Positive | Positive | Positive |
| K | 16.67 mSEC | 16.75 mSEC | 20.07 mSEC |
| L | 0.19 mSEC | 0.6 mSEC | 0.868 mSEC |
| M | 2.3 mSEC | 0.14 mSEC | 0.208 mSEC |
| N | 1.6 mSEC | 0.0 mSEC | 0.009 mSEC |
| V-SYNC POLARITY | Positive | Negative | Negative |

4. ADJUSTMENT

* Refer to the CONTROLS LOCATION DIAGRAM(See 9 Page)

1. DC SUPPLY

- Adjust +B Adj (VR701) until +B voltage to obtain $15 \pm 0.1V$

2. REFERENCE TIME ADJUSTMENT FOR MODE SELECTION

- Before reference time adjusting, connect oscilloscope-probe to pin 3 of IC201
- Adjust (VR209) to obtain $18.7 \pm 0.3m$ SEC at CGA or EGA mode signal

3. HORIZONTAL LINEARITY

- Adjust H-linearitycoil(L302) for the best linearity

4. HORIZONTAL WIDTH

- MODE 1 : Adjust 1H-width(VR305) for the approximate desired display width.
- MODE 2 : Adjust 2H-width(L301) for the approximate desired display size.
- MODE 3 : Adjust 3H-width(VR304) for the approximate desired display size.

5. VERTICAL LINEARITY

- Adjust V-linearity VR(204) for the best linearity.

6. VERTICAL HEIGHT

- MODE 1 : Adjust 1V-height(VR201) for the approximate desired display size.
- MODE 2 : Adjust 2V-height(VR203) for the approximate desired display size.
- MODE 3 : Adjust 3V-height(VR202) for the approximate desired display size.

7. CENTERING

- Loosen the clamp of Deflection Yoke and carefully move the yoke on the neck on the neck of the picture tube as far as possible.
- Rotate the yoke until the top and bottom edge of the raster are straight

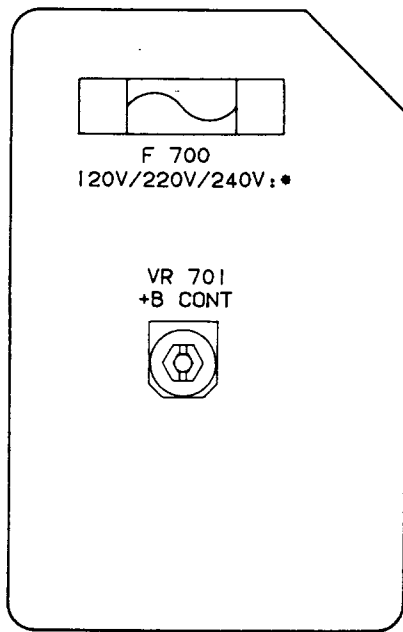
8. SUB-BRIGHTNESS

- Adjust sub-brightness control (VR308) to back raster cut-off point at contrast control (VR101) and brightness control (VR308) fully clock wise position.

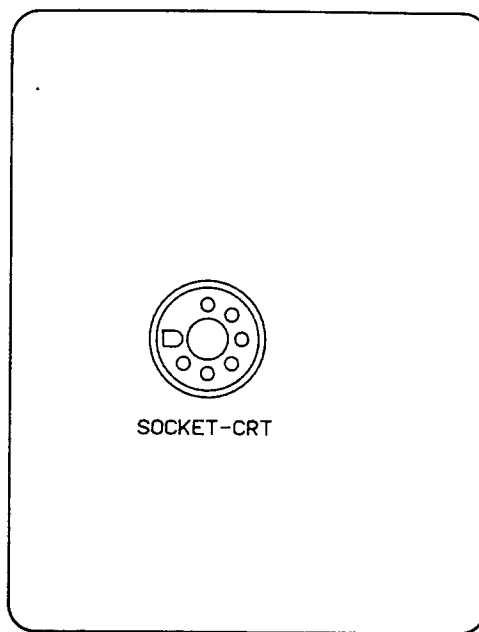
9. FOCUS

- Adjust focus control (VR309) for providing the best focus at brightness and contrast good viewable point.

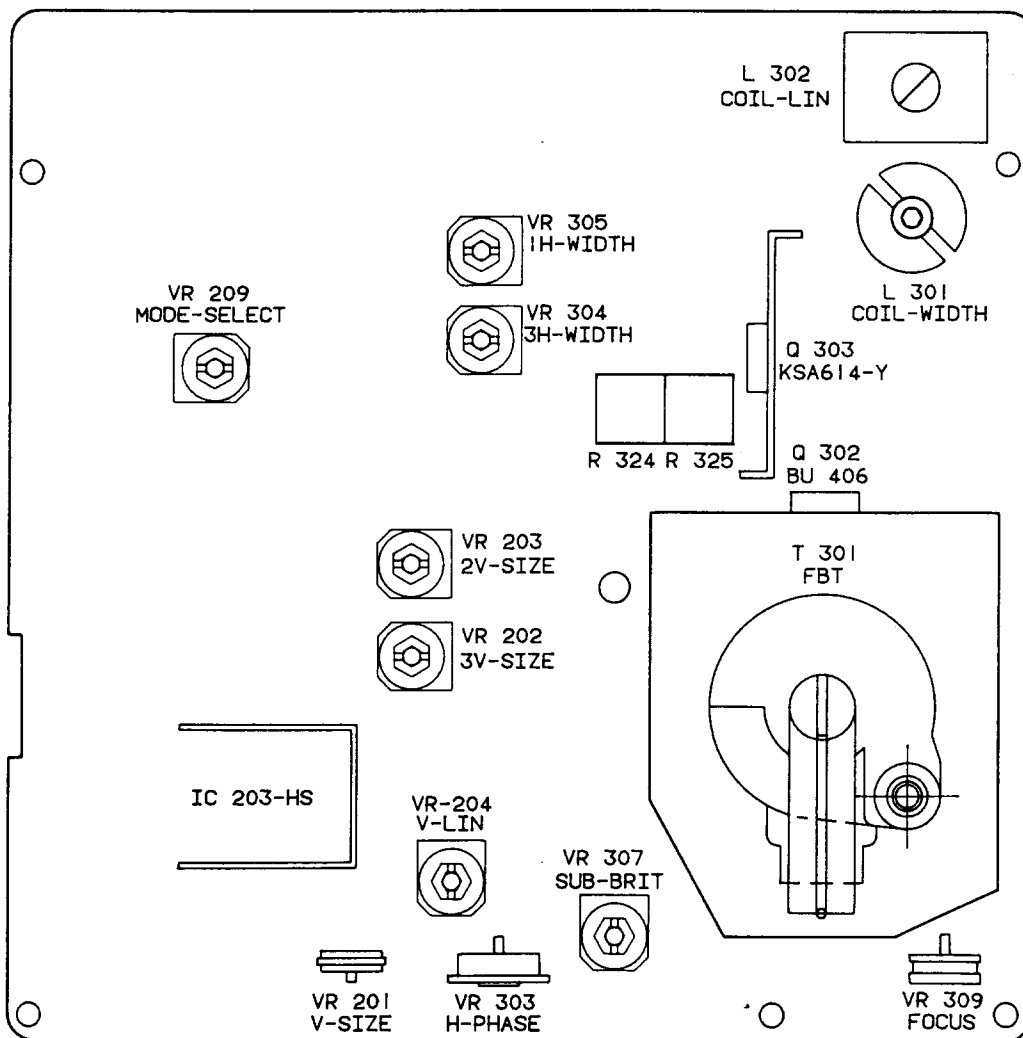
CONTROL LOCATION DIAGRAM



(POWER PCB)

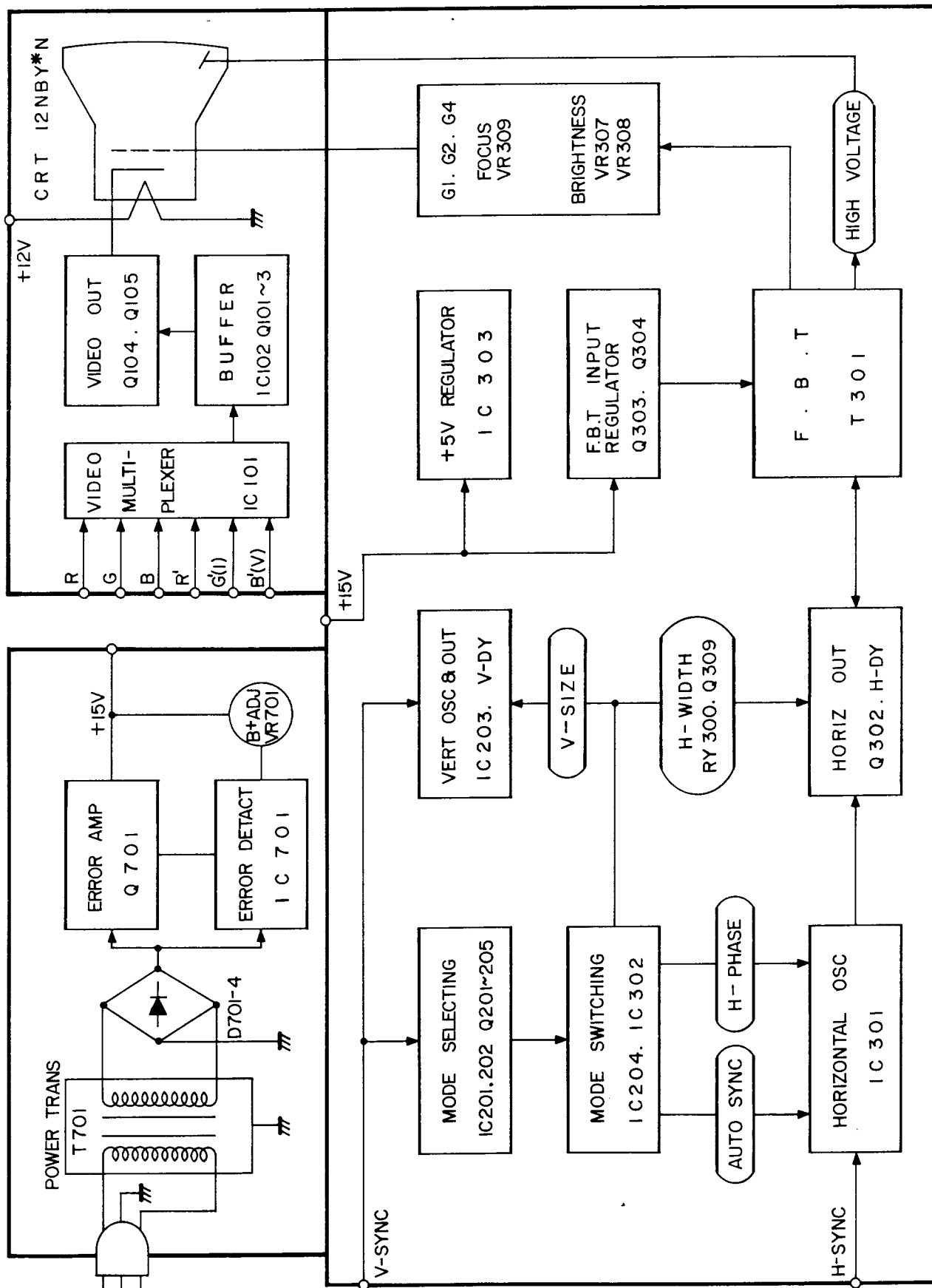


(VIDED OUTPUT PCB)

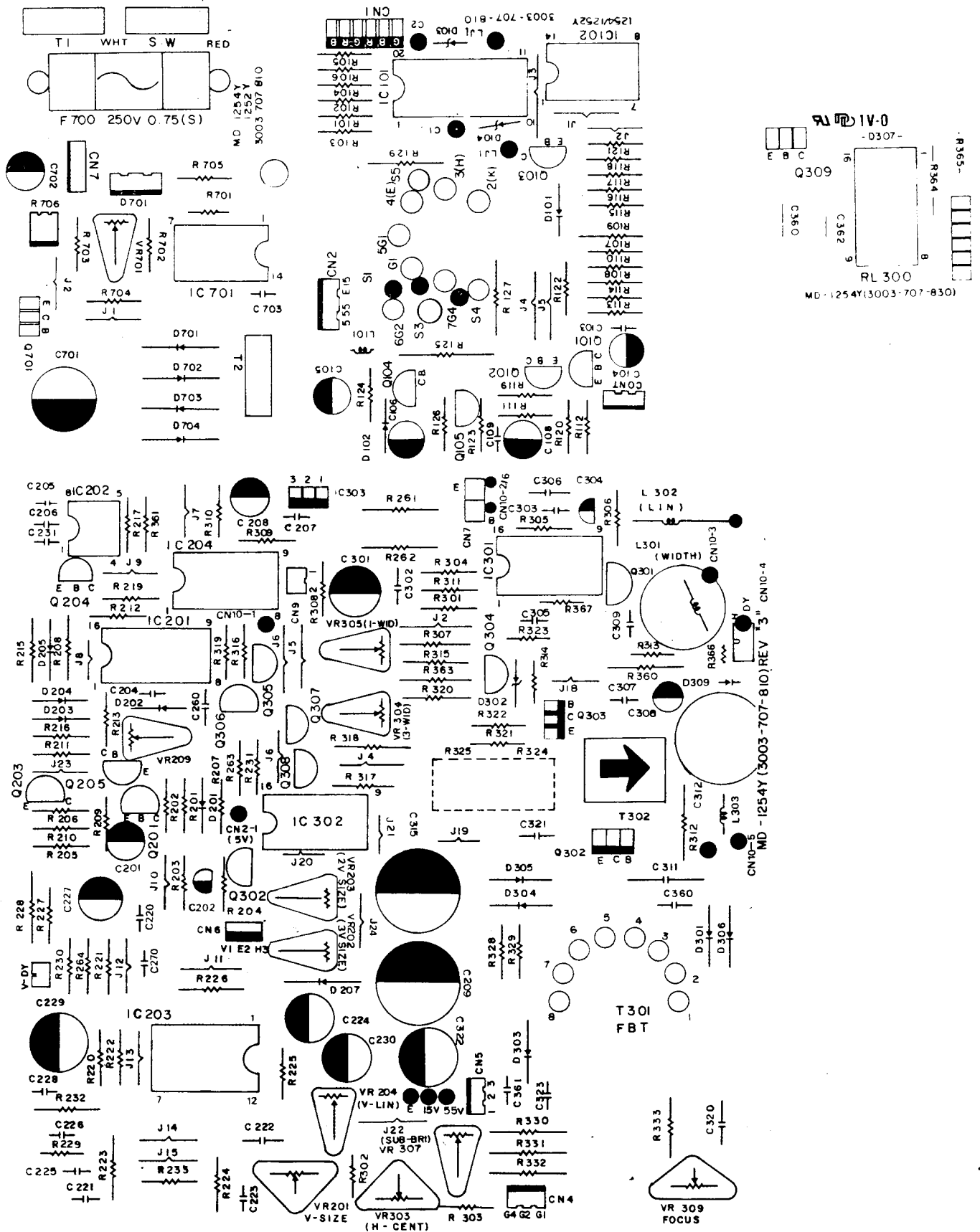


(MAIN-P.C.B)

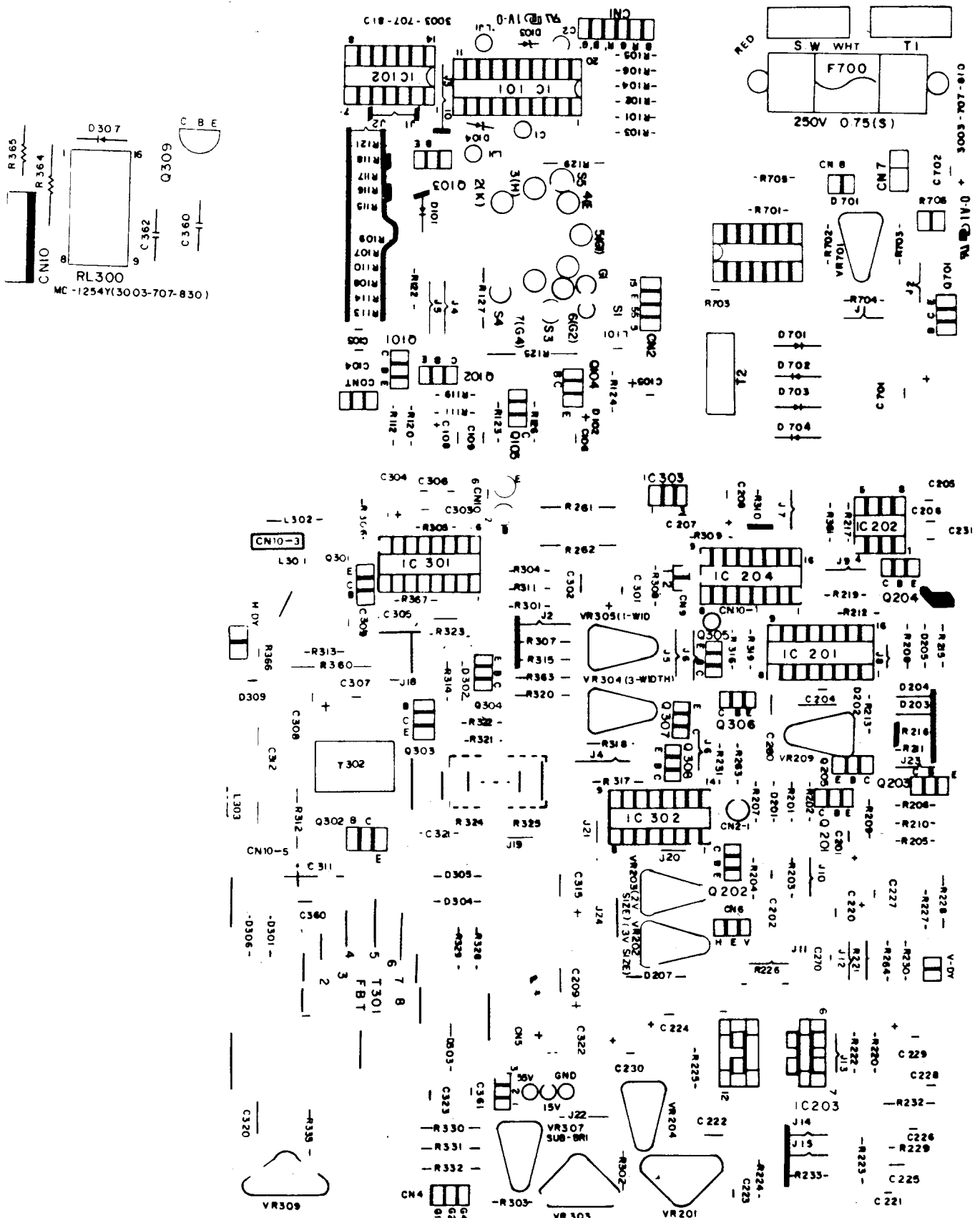
5. BLOCK DIAGRAM



6. P.C BOARD DIAGRAM (PARTS SIDE)

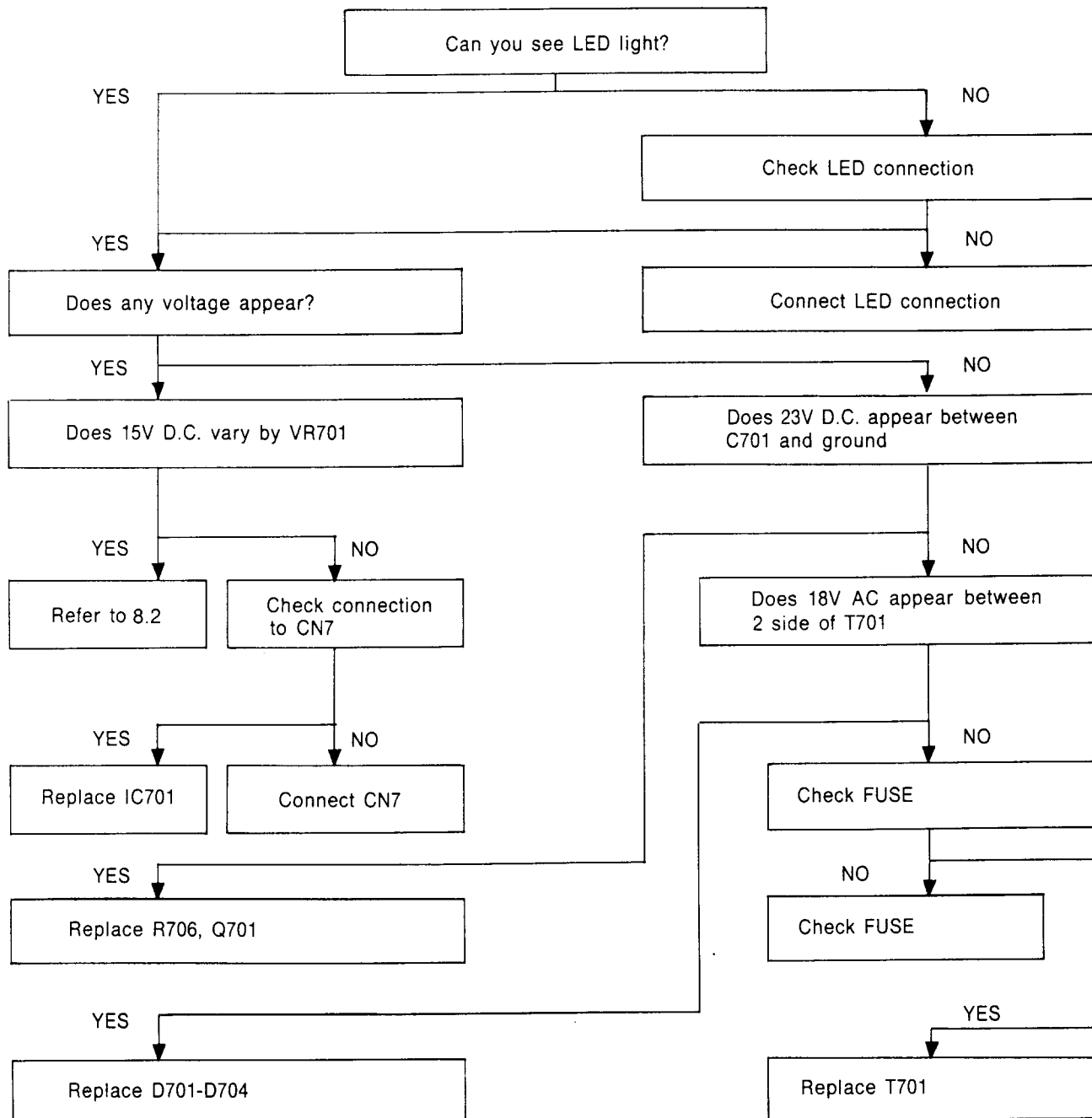


7. P.C BOARD DIAGRAM (FOIL SIDE)



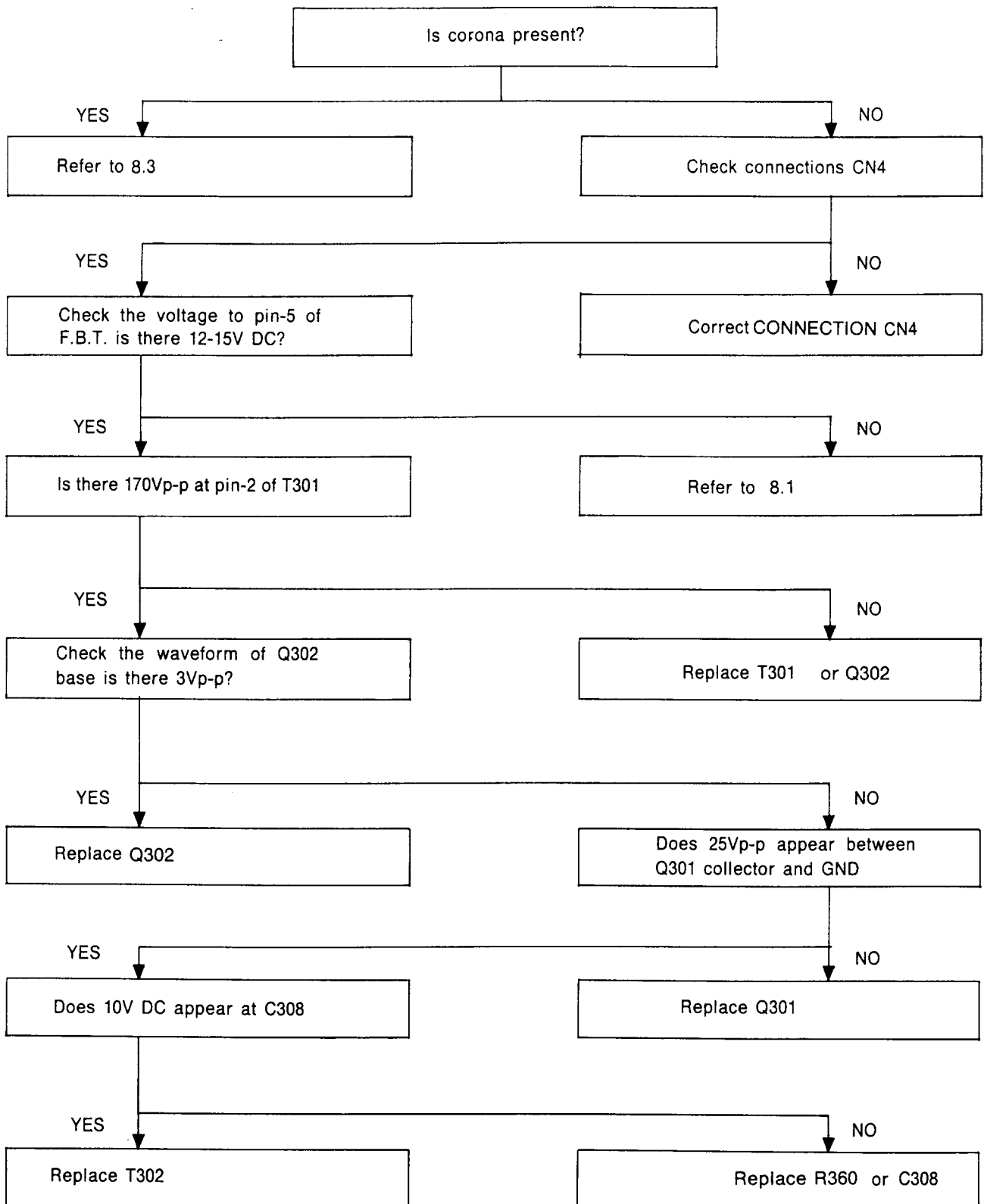
8. TROUBLE SHOOTING

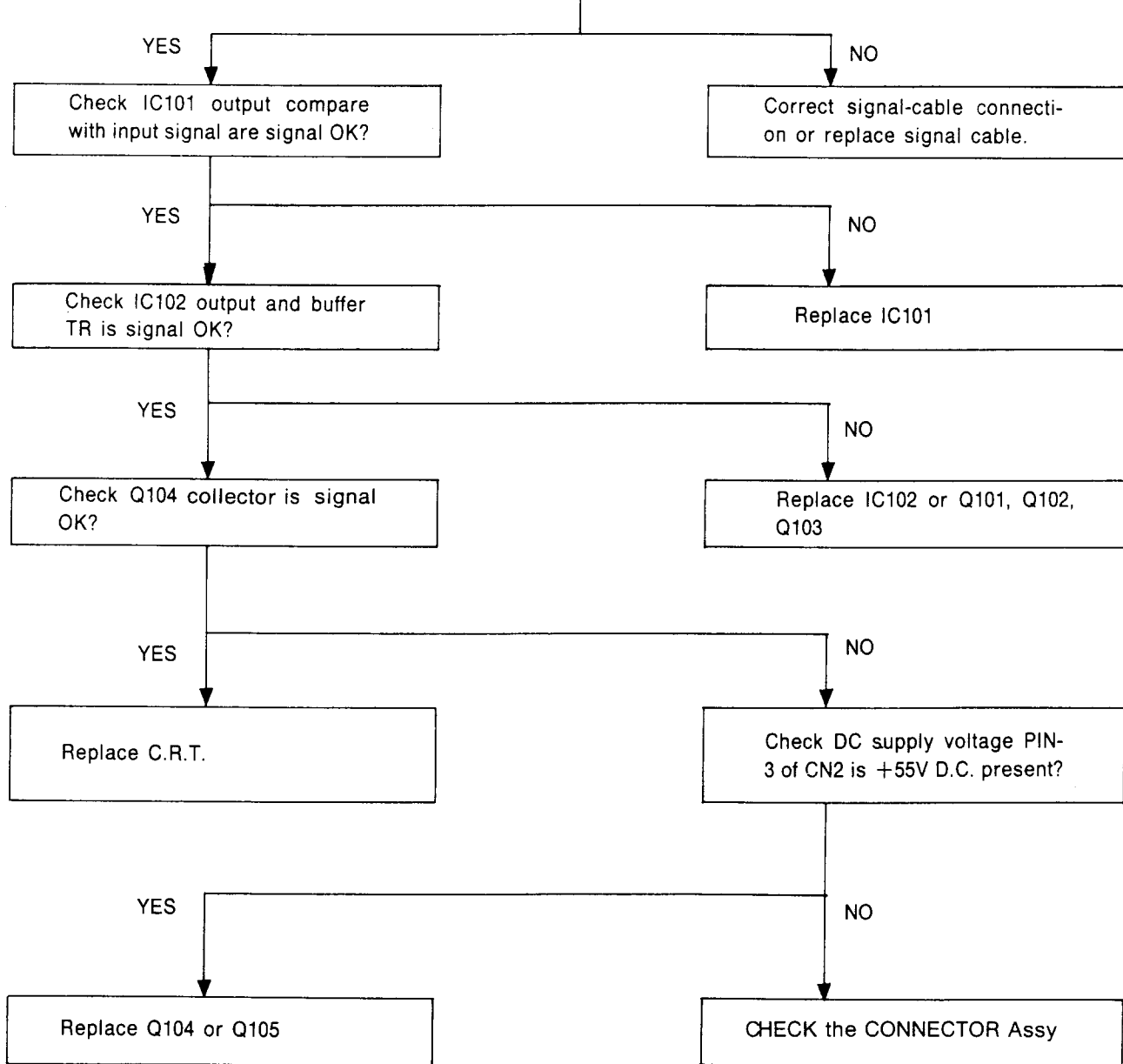
8-1. NO-POWER



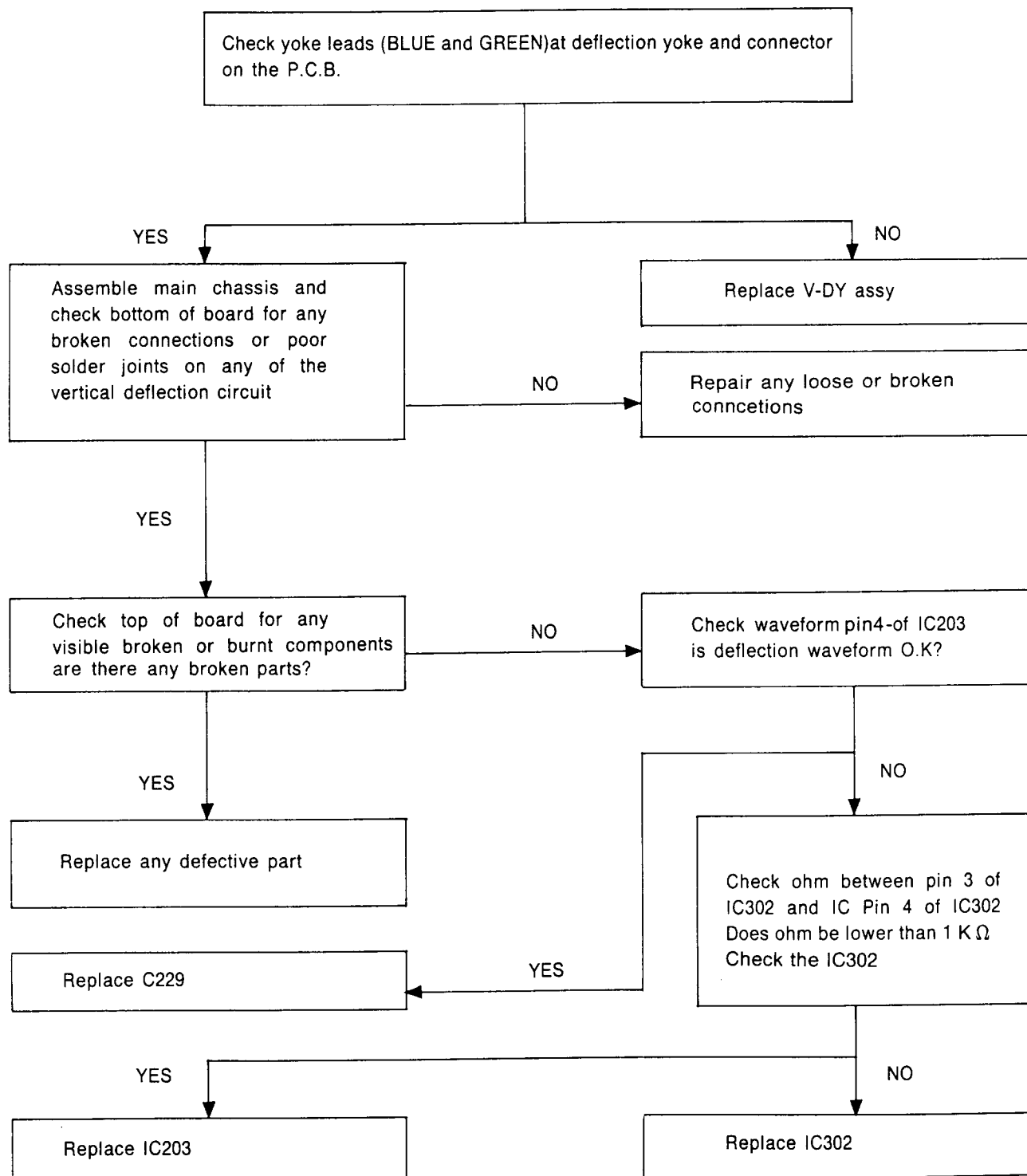
8-2. NO RASTER

Before checking see the sub-brightness (VR307) to clockwise Maximum point.

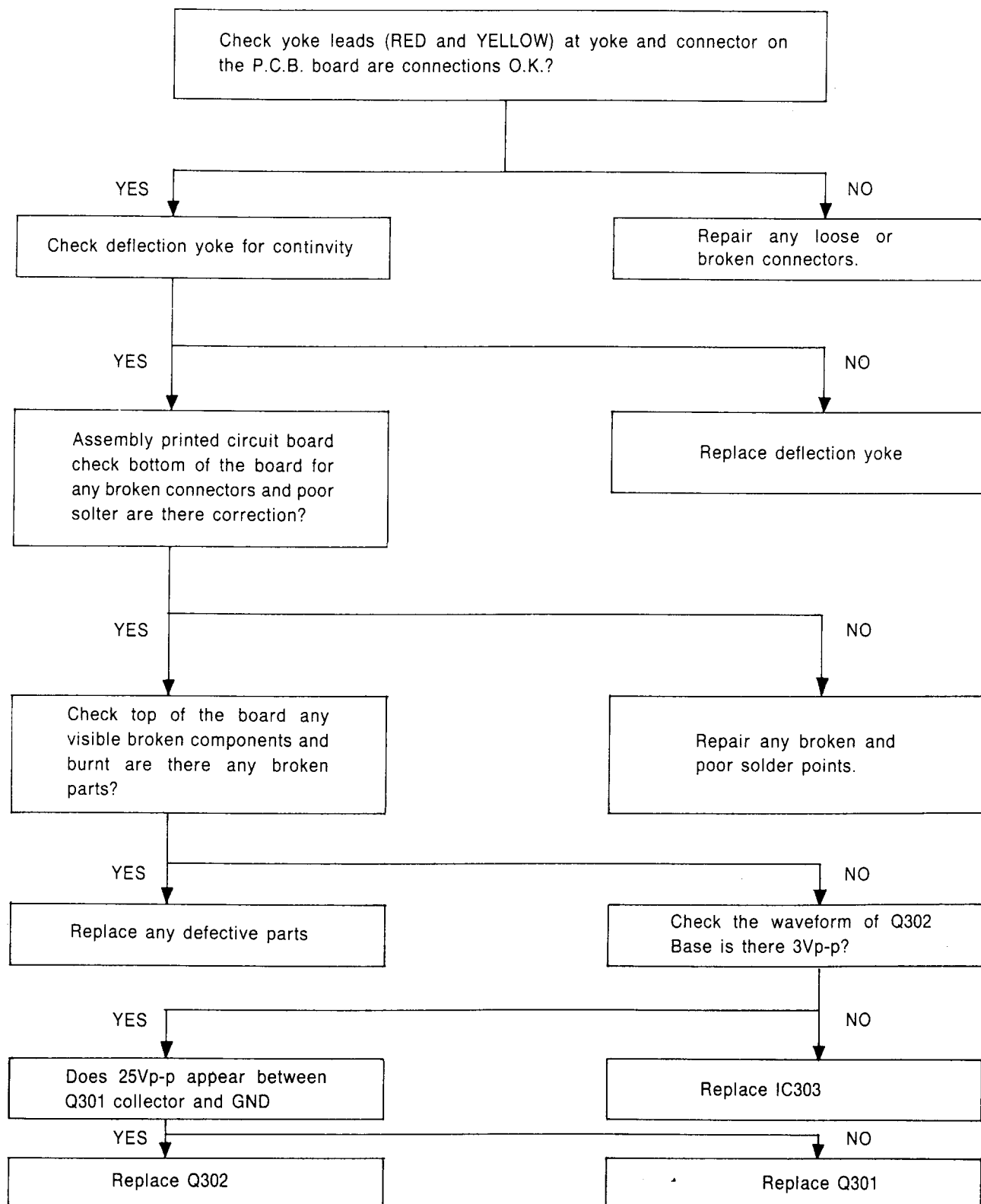




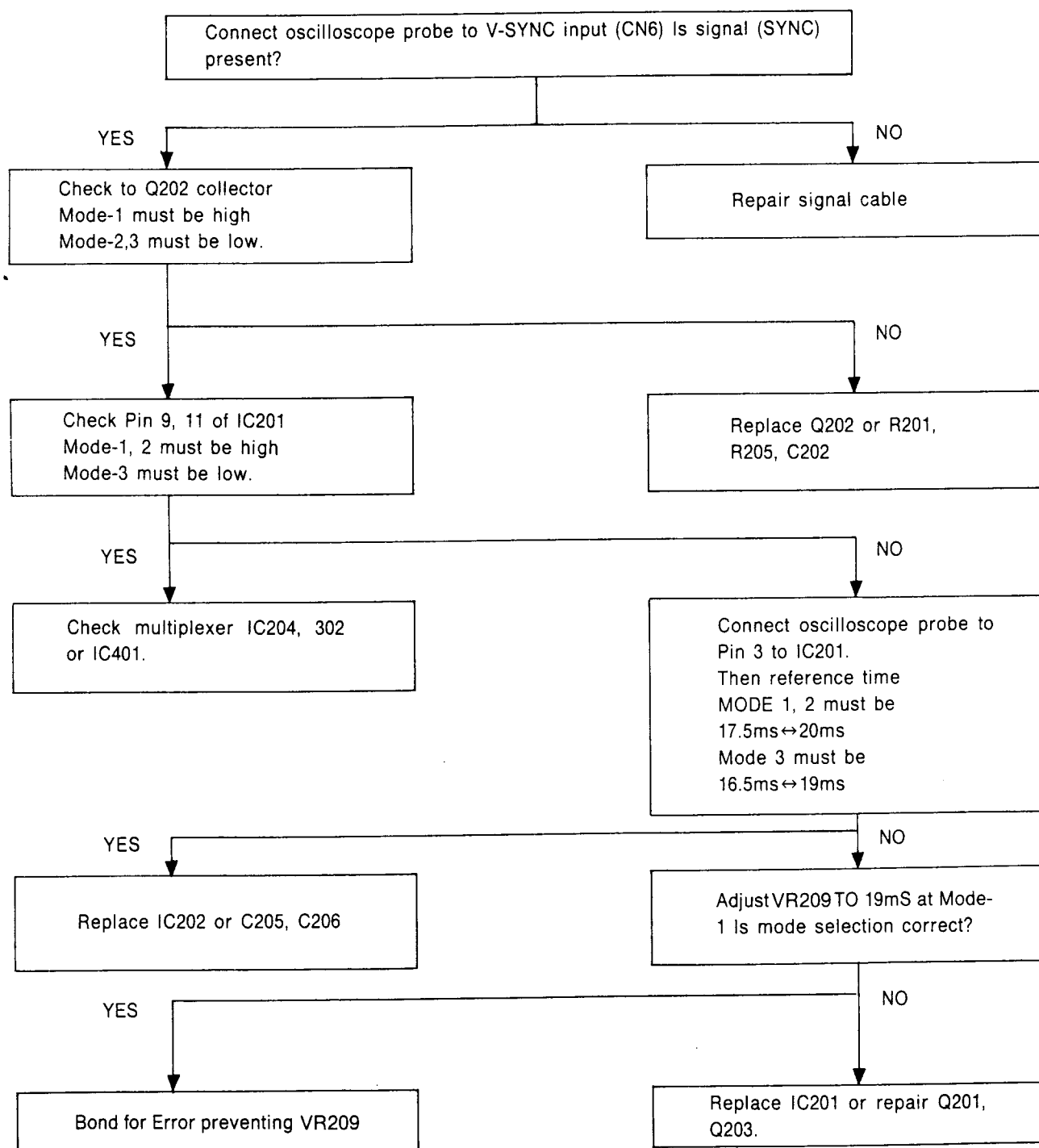
8-4. NO VERTICAL DEFLECTION



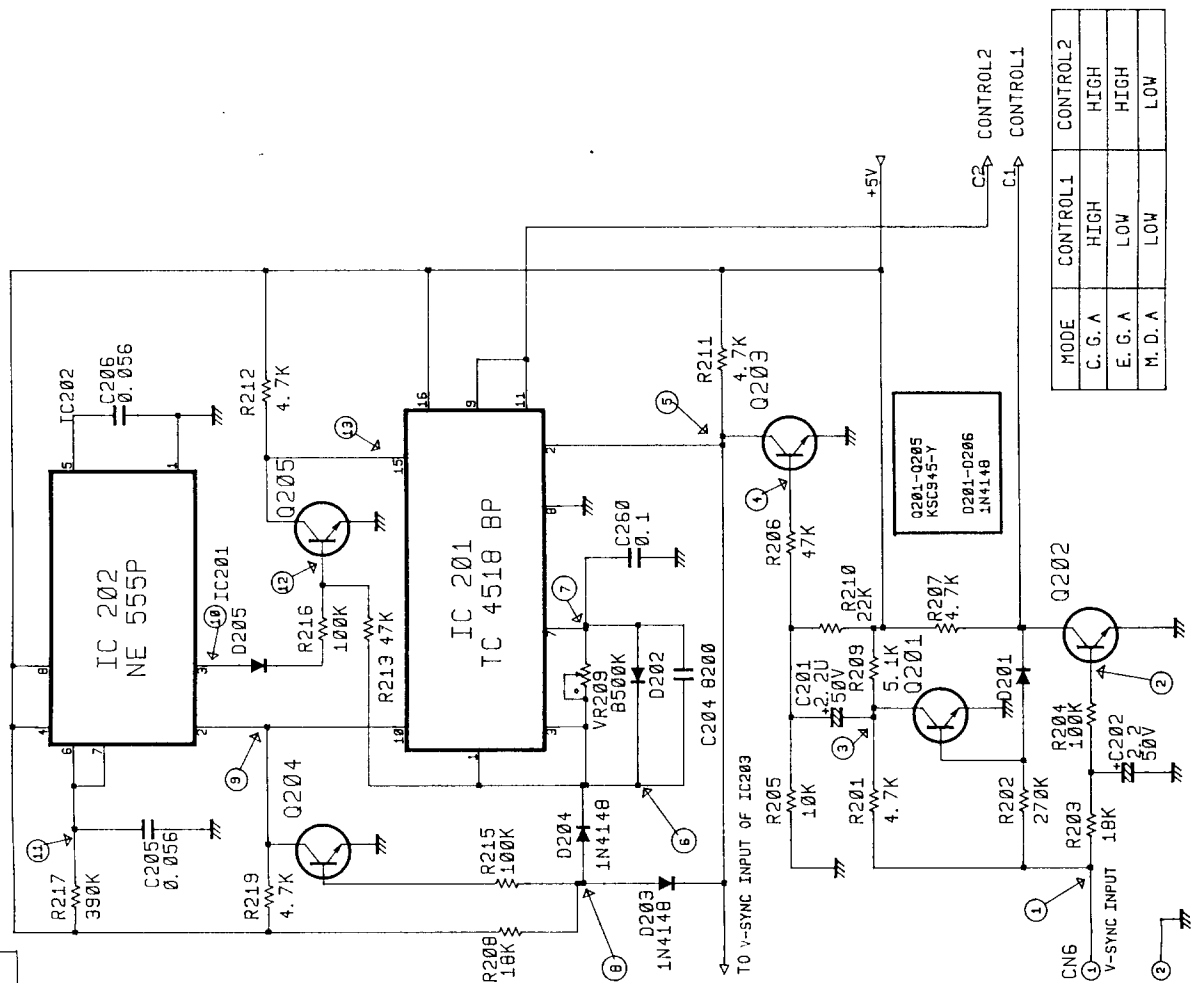
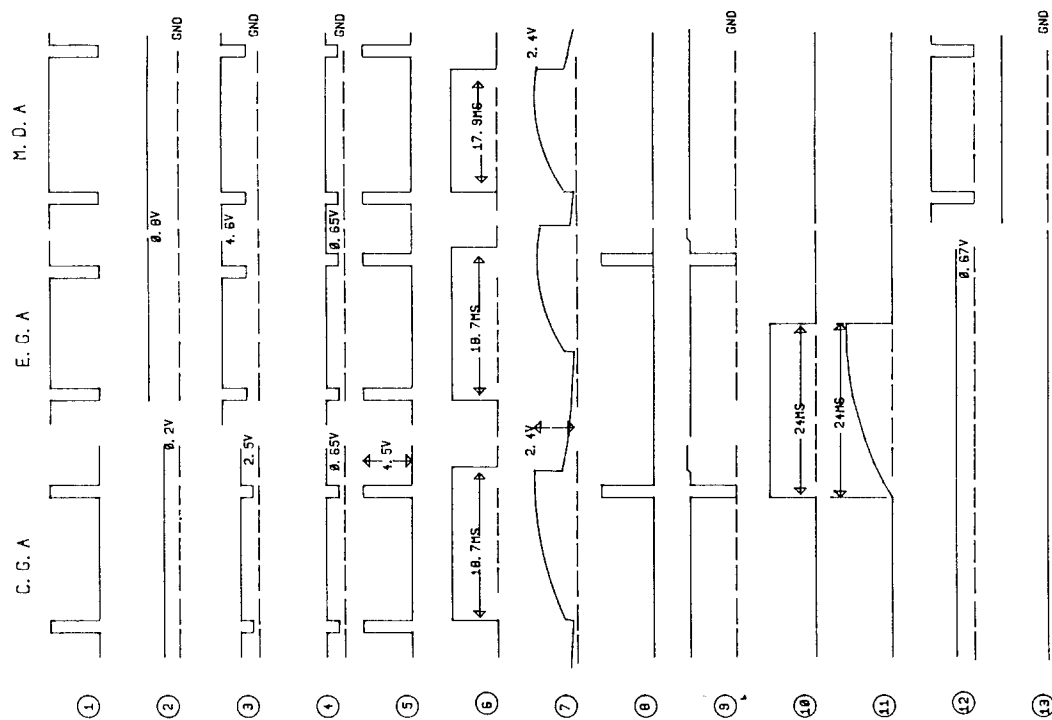
8-5. NO HORIZONTAL DEFLECTION



8-6. MODE SELECTION ERROR

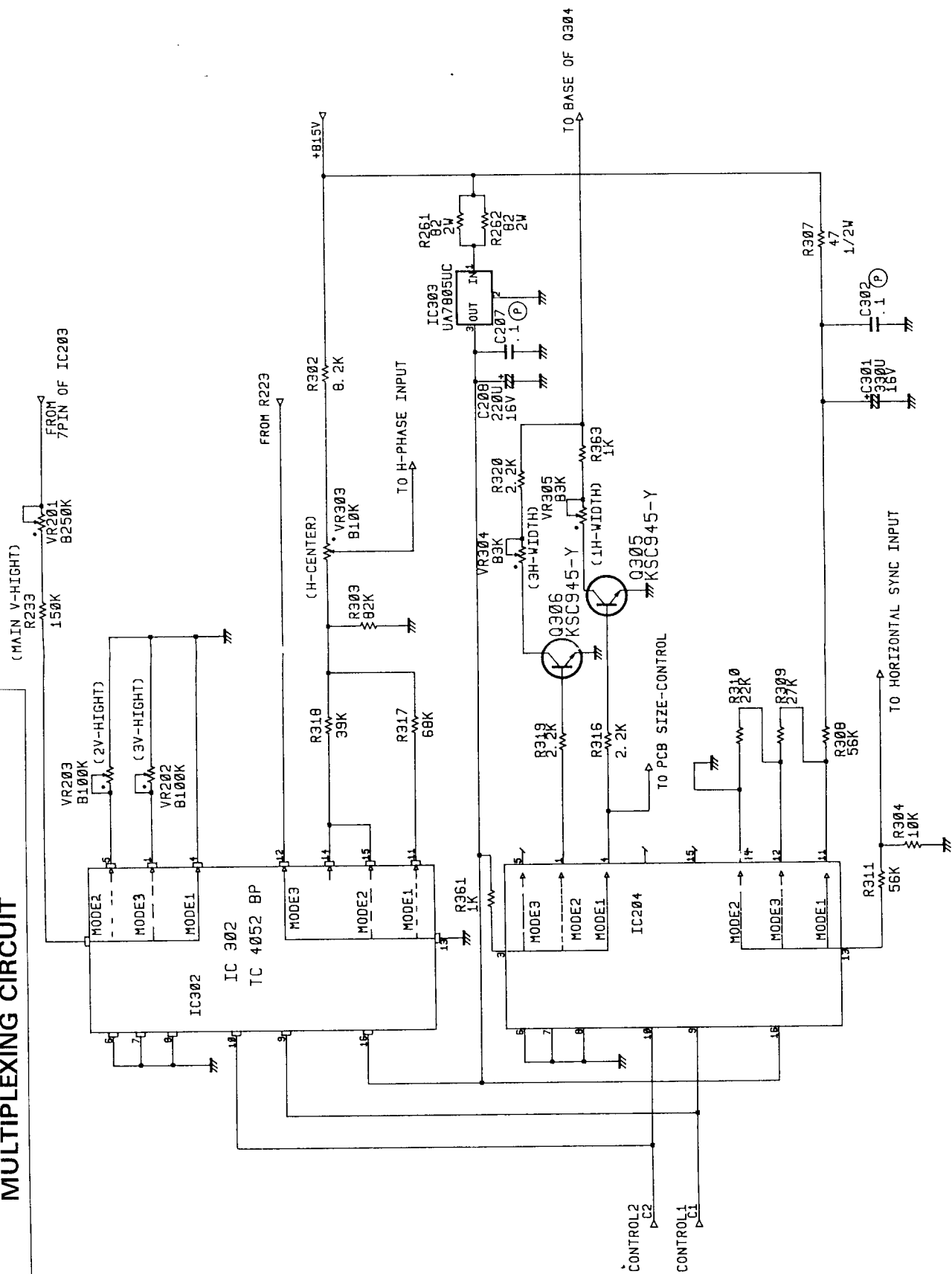


AUTOMATIC MODE SELECTING CIRCUIT

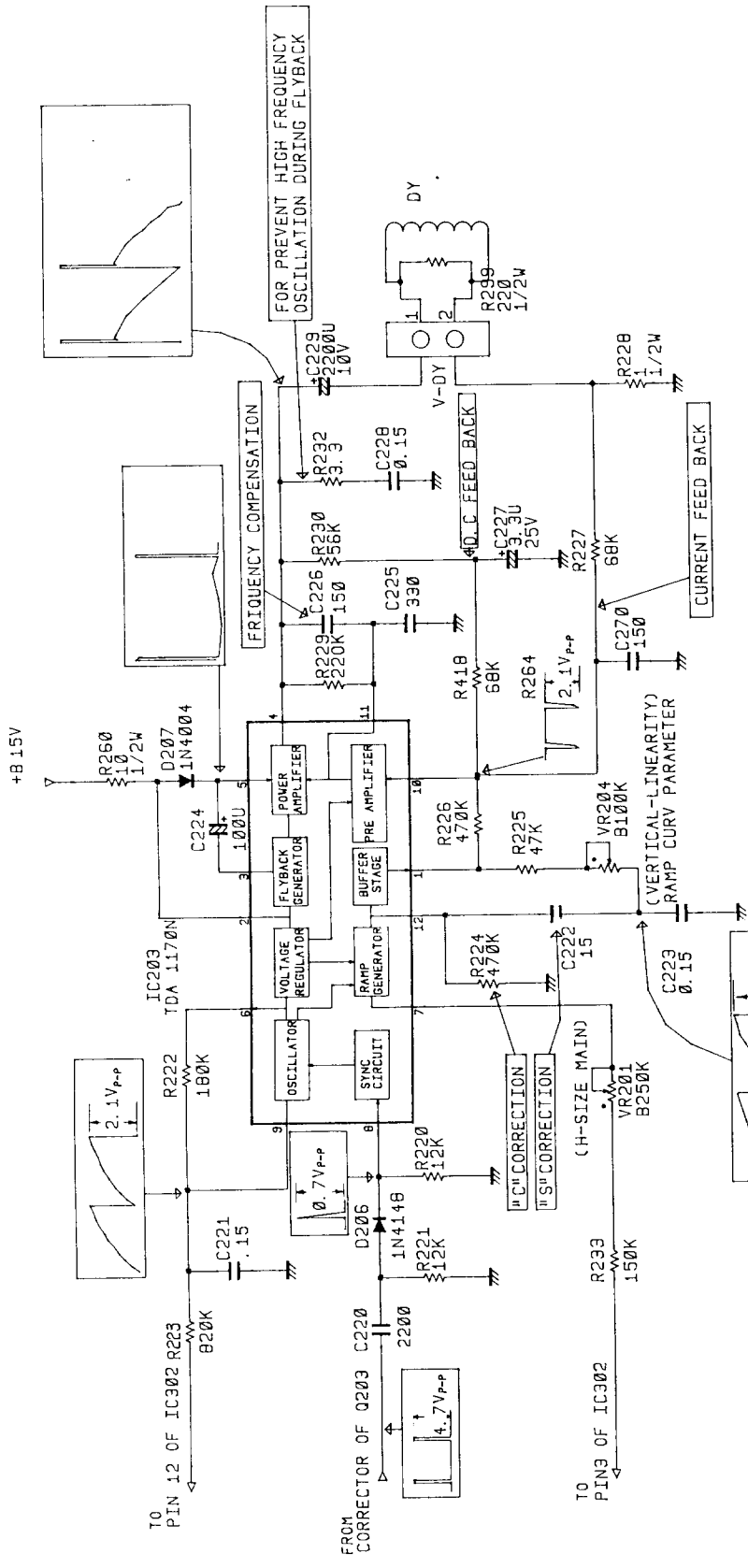


| MODE | CONTROL1 | CONTROL2 |
|---------|----------|----------|
| C. G. A | HIGH | HIGH |
| E. G. A | LOW | HIGH |
| M. D. A | LOW | LOW |

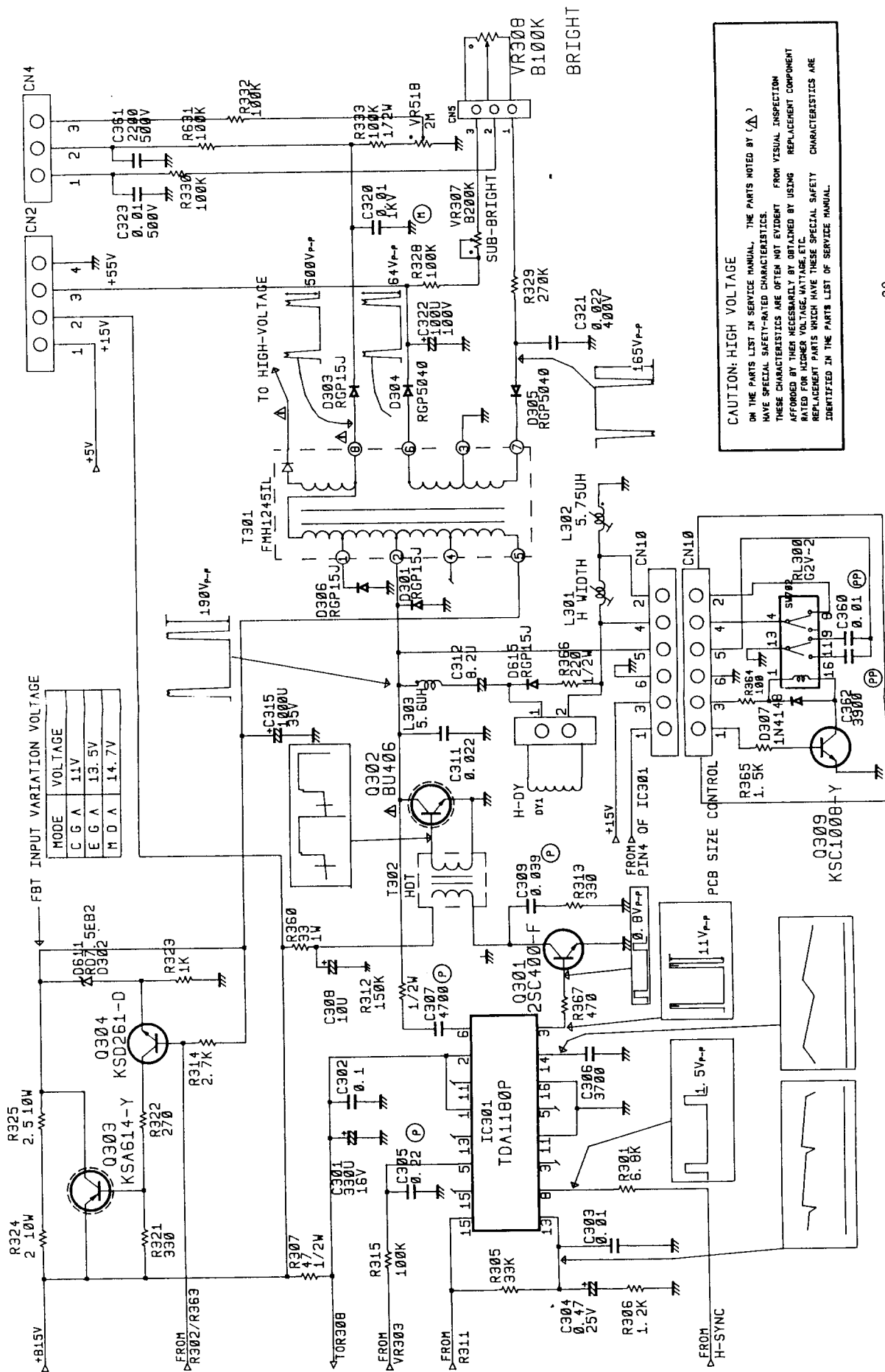
MULTIPLEXING CIRCUIT



VERTICAL DEFLECTION CIRCUIT



HORIZONTAL DEFLECTION CIRCUIT



CAUTION: HIGH VOLTAGE

ON THE PARTS LIST IN SERVICE MANUAL, THE PARTS NOTED BY (A) HAVE SPECIAL SAFETY-RATED CHARACTERISTICS. THESE CHARACTERISTICS ARE OFTEN NOT EVIDENT FROM VISUAL INSPECTION AFFORDED BY THEM NECESSARILY, BY OBTAINED BY USING REPLACEMENT COMPONENT RATED FOR HIGHER VOLTAGE, WATTAGE, ETC. CHARACTERISTICS ARE REPLACEMENT PARTS WHICH HAVE THESE SPECIAL SAFETY IDENTIFIED IN THE PARTS LIST OF SERVICE MANUAL.

VIDEO CIRCUIT

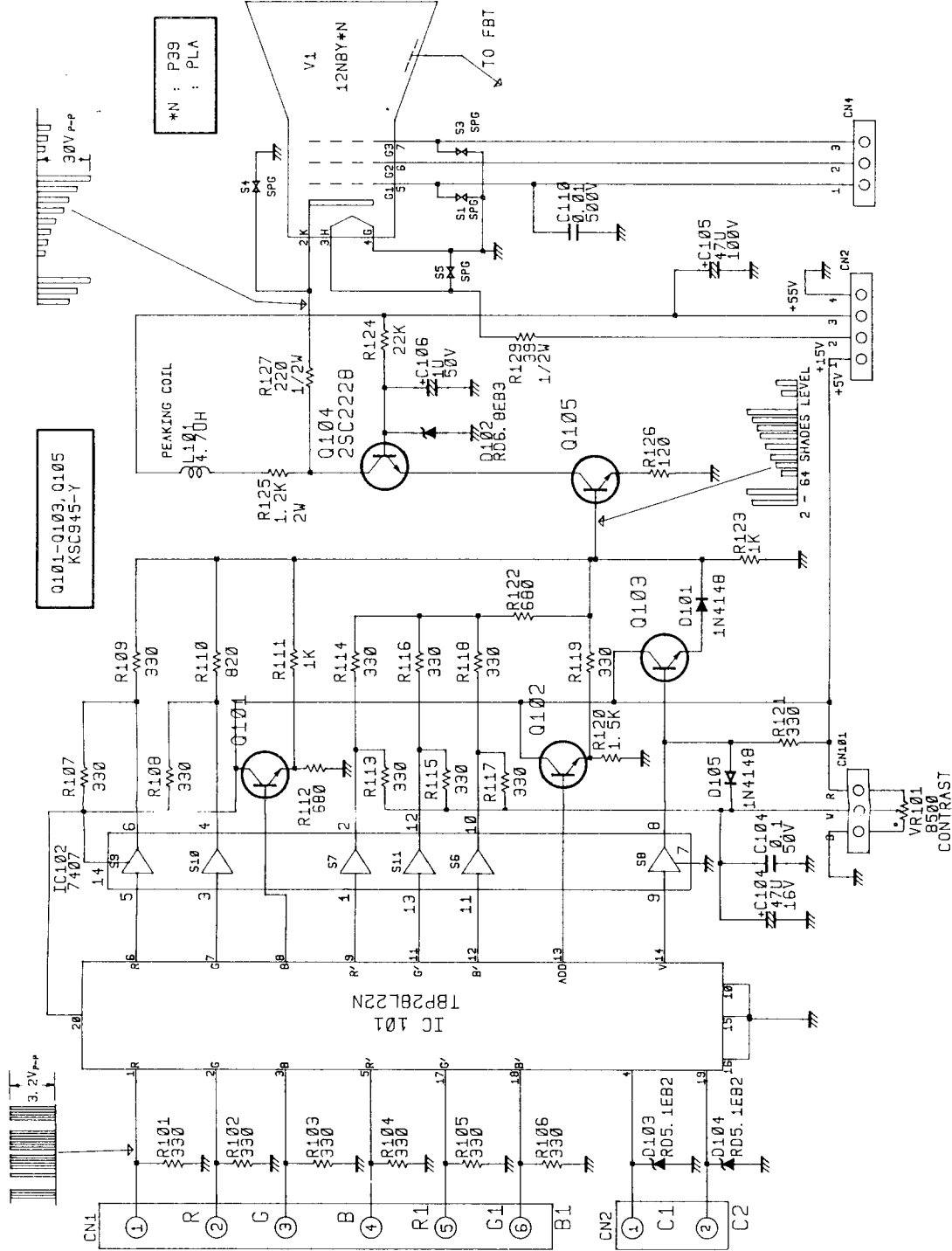
SIGNAL MULTI-PLEXING CHART OF IC101

| C G A | E G A | M G A |
|-------------------------------|-------------------------------|-------------------------------|
| INPUT OUTPUT R1(1) → R6(6) | INPUT OUTPUT R1(1) → R6(6) | INPUT OUTPUT R1(1) → R6(6) |
| G2(2) → G7(7) | G2(2) → G7(7) | G2(2) → G7(7) |
| B3(3) → B8(8) | B3(3) → B8(8) | B3(3) → B8(8) |
| R1(9) → R14(14) | R1(9) → R14(14) | R1(9) → R14(14) |
| G1(1) → G14(14) | G1(1) → G14(14) | G1(1) → G14(14) |
| B1(1) → B14(14) | B1(1) → B14(14) | B1(1) → B14(14) |

* IF ANY SIGNAL INPUT, THEN
ADD SIGNAL OUTPUT AT EACH MODE

MODE SELECTING SIGNAL

| MODE | C1 | C2 |
|-------|------|------|
| C G A | HIGH | HIGH |
| E G A | LOW | HIGH |
| M D A | LOW | LOW |



SCHEMATIC DIAGRAM

MODEL NO:MY252

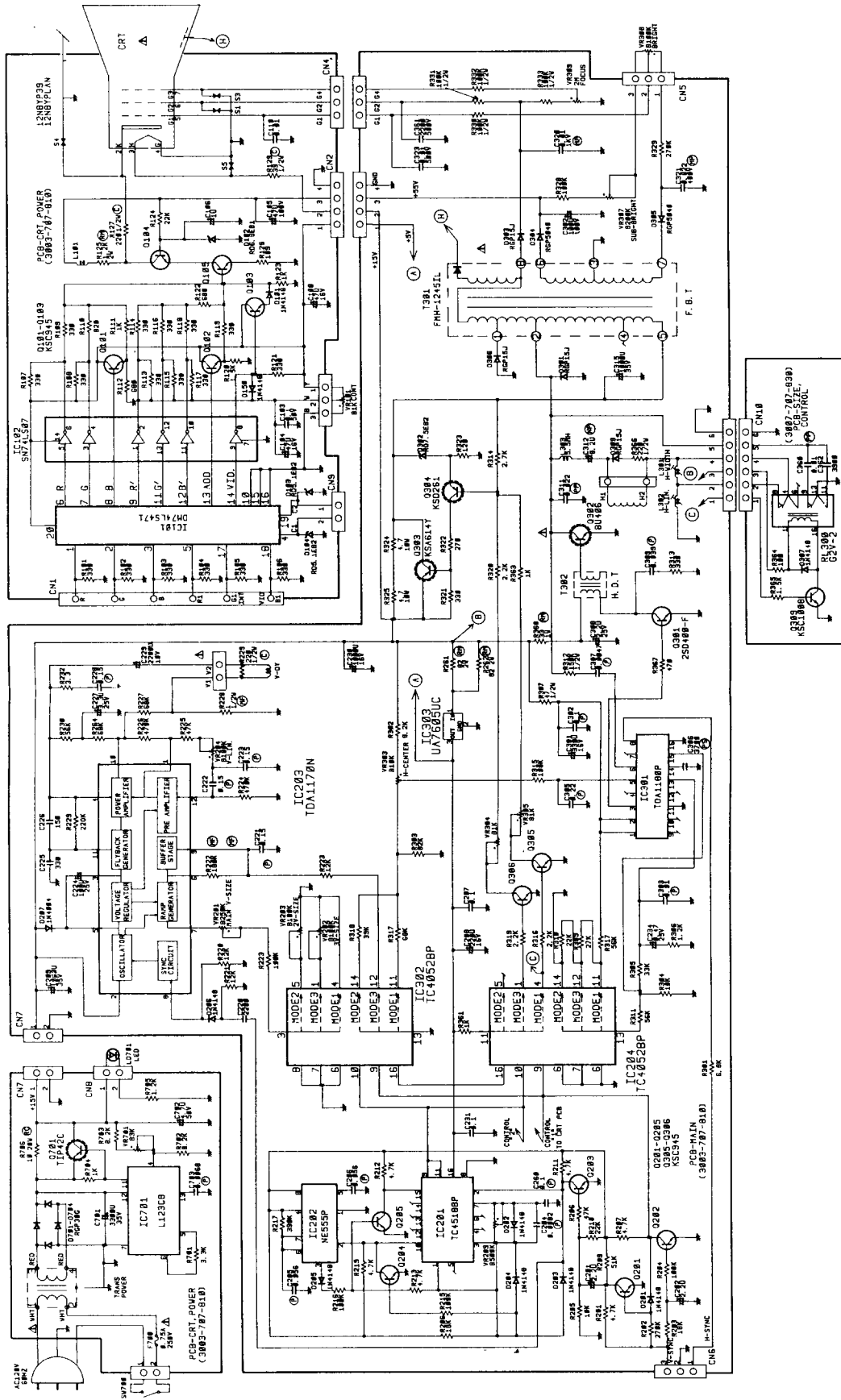
CHASSIS NO: G. S. F

WARNING: "THIS EQUIPMENT CONTAINS SAFETY CRITICAL COMPONENTS. ALL PARTS SHOWN IN THE SHADED AREA AS OF THE SCHEMATIC ARE SAFETY CRITICAL FOR CONTINUED SAFETY. REPLACE SAFETY CRITICAL COMPONENTS ONLY WITH MANUFACTURER'S RECOMMENDED PARTS LIST FOR EXACT REPLACEMENTS."

AVERTISSEMENT: "CET EQUIPEMENT CONTIENT DES COMPOSANTS CRITIQUES POUR LA SECURITE. TOUTES LES PIECES INDIQUEES DANS LES ZONES OMBREES DU SCHEMA SONT CRITIQUES POUR LA SECURITE. POUR MAINTENIR LE DEGRE DE SECURITE DE L'APPAREIL, NE REMPLACEZ LES COMPOSANTS DONT LE FONCTIONNEMENT EST CRITIQUE QUE PAR DES PIECES RECOMMANDEES PAR LE FABRICANT. CONSULTER LA NOMENCLATURE DES PIECES POUR TROUVER LES PIECES DE RECHANGE EXACTES."

SIGNAL INFORMATION

| PIN | CCA | EGA | MOA |
|-----|-------------|-----|-----------|
| 1 | GROUND | R | GROUND |
| 2 | GROUND | R | GROUND |
| 3 | GROUND | R | GROUND |
| 4 | GROUND | R | GROUND |
| 5 | GROUND | R | GROUND |
| 6 | GROUND | R | GROUND |
| 7 | INTENSITY | B | INTENSITY |
| 8 | 15.75KHZ(P) | B | 22KHZ(P) |
| 9 | 50HZ(P) | B | 50HZ(N) |



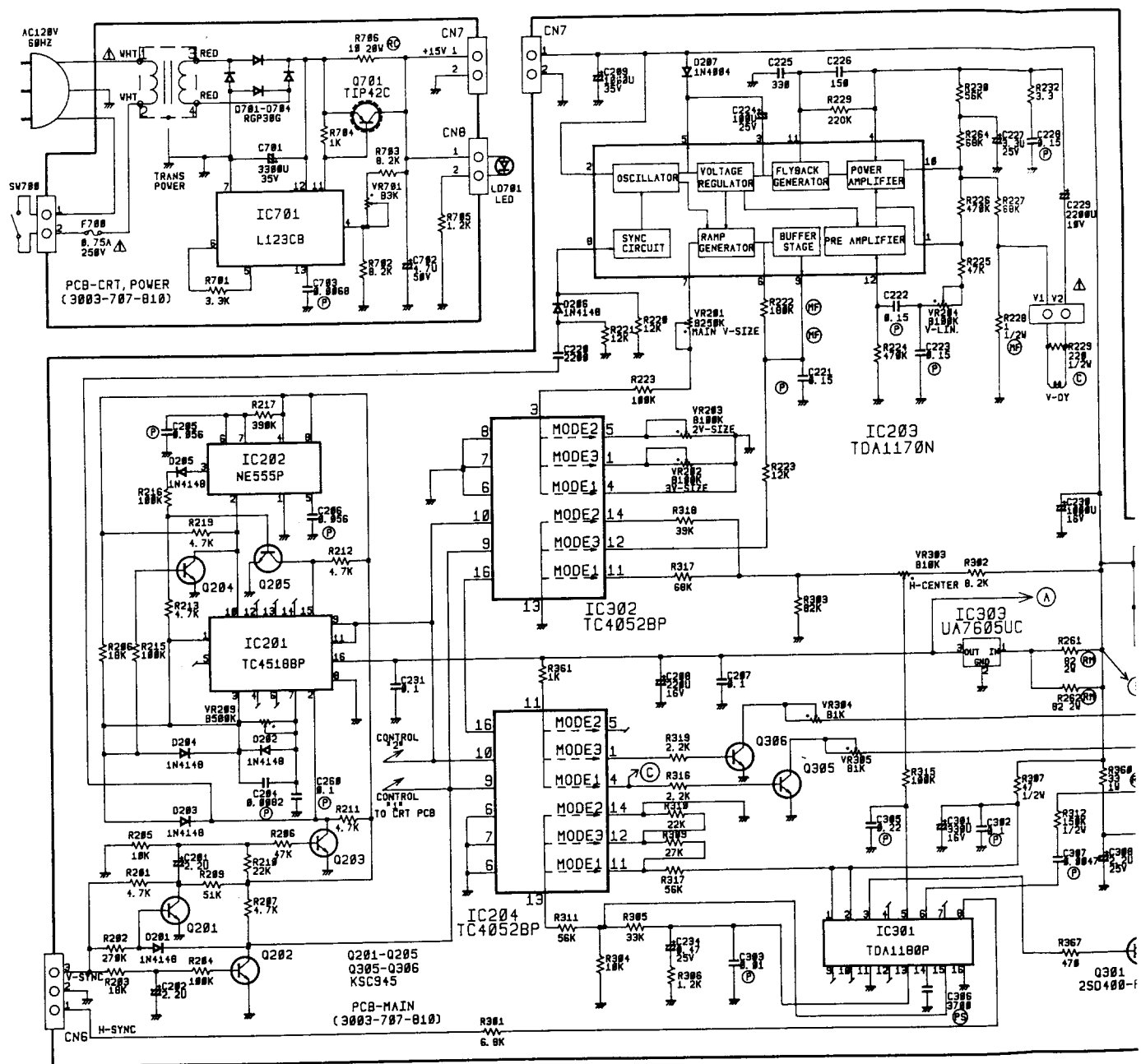
SCHEMATIC DIAGRAM

MODEL NO:MY252

CHASSIS NO: G. S. F

WARNING : "THIS EQUIPMENT CONTAINS SAFETY CRITICAL COMPONENTS. ALL PARTS SHOWN IN THE SHADED AREA AS OF THE SCHEMATIC ARE SAFETY CRITICAL FOR CONTINUED SAFETY REPLACE SAFETY CRITICAL COMPONENTS ONLY WITH MANUFACTURER'S RECOMMENDED PARTS LIST FOR EXACT REPLACEMENTS."

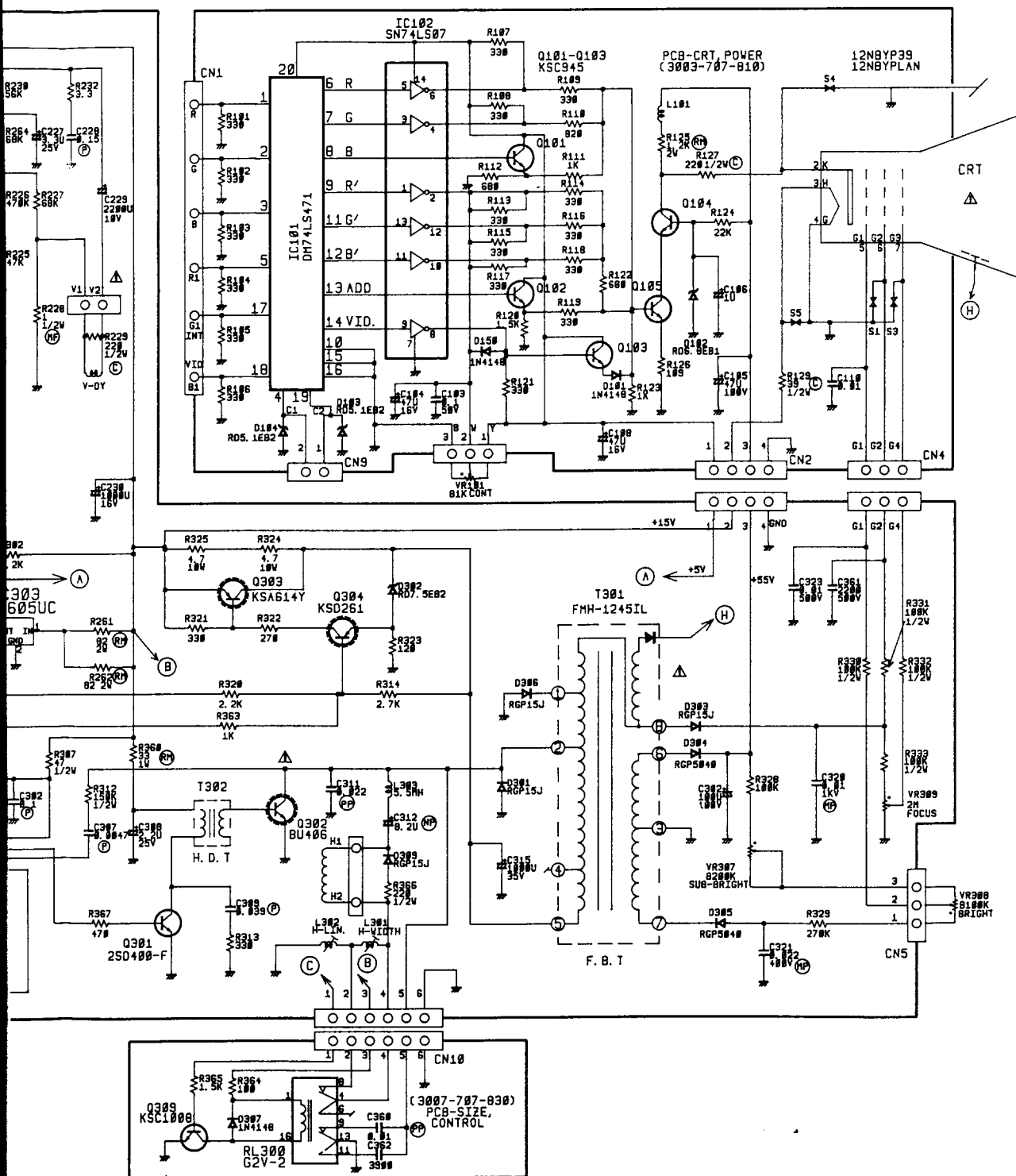
AVERTISSEMENT : "CET EQUIPEMENT ETOIRI
POUR LA SECURITE TOUTES LES PIECES INDIQUEES
SCHEMA SONT CRITIQUES POUR LA SECURITE PO
SECURITE DE L'APPAREIL NE REMPLACER LES C
EST CRITIQUE POUR LA SECURITE QUE PAR DES
FABRICANT CONSULTER LA NOMENCLATURE DES P
DE RECHANGE EXACTES."



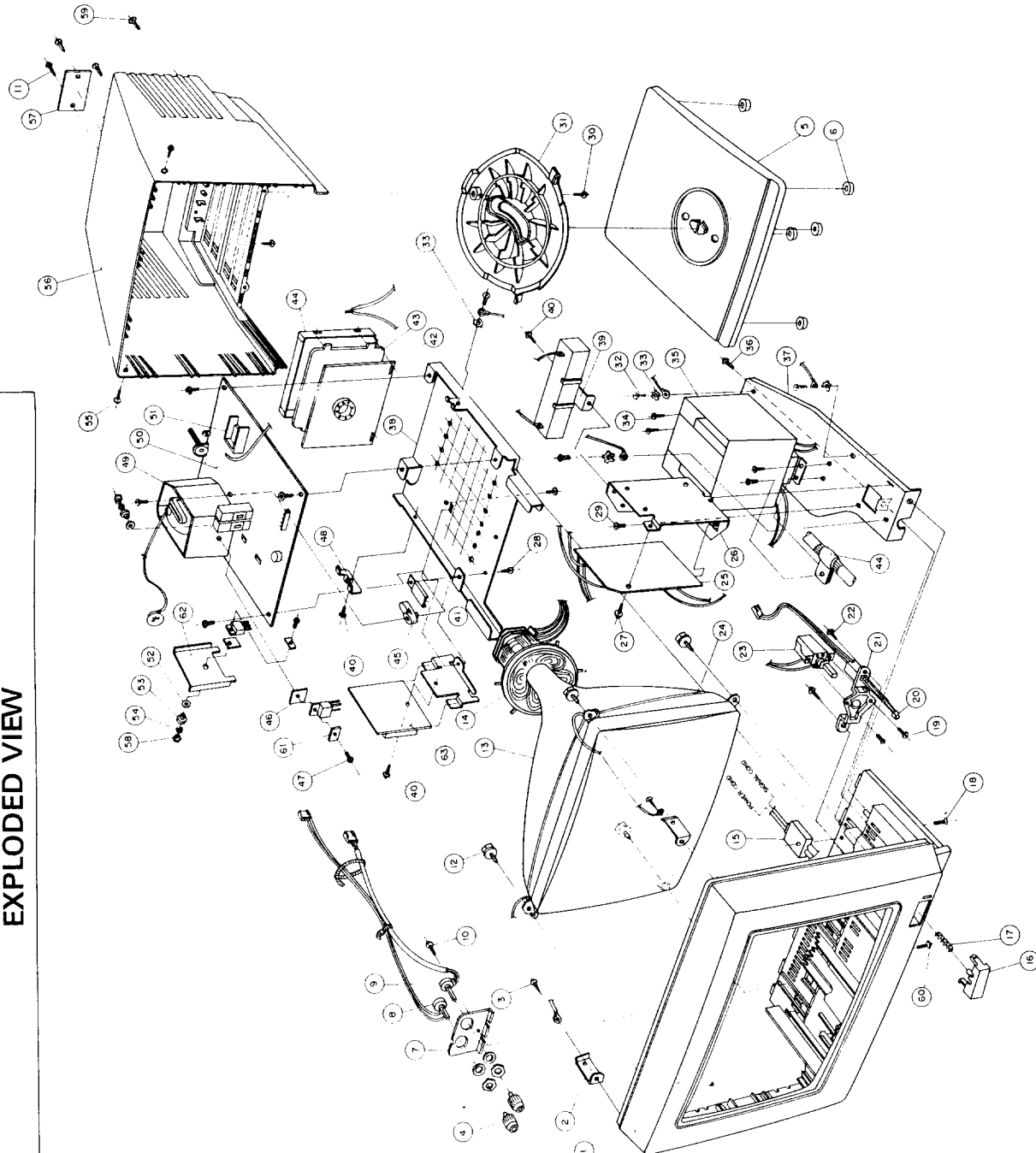
CET EQUIPEMENT EQUIRE DE COMPOSANTS CRITIQUES
 ES LES PIECES INDIQUEES DANS LES ZONES OMBREES DU
 POUR LA SECURITE POUR MAINTENIR LE DEGRE DE
 NE REMPLACER LES COMPOSAN DONT LE FONCTIONNEMENT
 SECURITE QUE PAR DES PIECES RECOMMANDEES PAR LE
 A NOMENCLATURE DES PIECES POUR TROUVER LES PIECES

SIGNAL INFORMATION

| PIN | CGA | EGA | MDA |
|-----|-------------|----------|-------------|
| 1 | GROUND | GROUND | GROUND |
| 2 | GROUND | R' | |
| 3 | R | R | |
| 4 | G | G | |
| 5 | B | B | |
| 6 | INTENSITY | G' | INTENSITY |
| 7 | | B' | VIDEO |
| 8 | 15.75KHZ(P) | 22KHZ(P) | 18.43KHZ(P) |
| 9 | 60HZ(P) | 60HZ(N) | 50HZ(N) |



EXPLODED VIEW



| NO | CODE | NO | DESCRIPTION | SPECIFICATION | Q'TY | REMARKS |
|----|--------------|---------------------|--------------------------|---------------|------|---------|
| 53 | 269-107-410 | PCB SIZE CONTROL | 167 445 445 | | 1 | |
| 62 | 5683-703-111 | HEATING TR | 95B1-0 TO B | | 1 | |
| 61 | 7304-701-110 | WASHER REC | 95C-1 T1.5 IN | | 3 | |
| 60 | 7048-530-06 | SCREW TAP RH | 25-3X6 FE FZY | | 1 | |
| 59 | 7128-540-12 | SCREW TAP TH | 25-4X12 FE FZW | | 2 | |
| 58 | 7098-113-001 | NUT HEX | 1-M3 FE FZY | | 2 | |
| 57 | 8034-762-4 | LABEL RATING | 1000(5)H14 TO 3 | | 1 | |
| 56 | 6001-830-040 | COVER BACK | PRO VO BEE 327 222222 | | 1 | |
| 55 | 7024-700-111 | SCREW TAP RH | 1-M4X12 FE FZY GRAY BRNT | | 2 | |
| 54 | 318-103-1001 | WASHER SPRING | PH 3.0 FE FZY | | 2 | |
| 53 | 3934-103-120 | INSULATOR TR | 3 B-80 2-5H | | 2 | |
| 52 | 7304-700-770 | WASHER PLAIN | 104266 SPC1103FEZY | | 2 | |
| 51 | 5614-701-71 | HEAT SINK IC | 95C-1 T1.0 5h | | 1 | |
| 50 | 9022-767-11 | WASHER MAIN | NO-1352 | | 1 | |
| 49 | 4942-702-810 | SHIELD /BT | 1 SPTF TO 306 | | 1 | |
| 48 | 6613-714-010 | BRNT SUPPORT PCB | 95BHC-1 T1.0 | | 1 | |
| 47 | 7048-130-08 | SCREW RH | 1-M3X8 FE FZY | | 1 | |
| 46 | 3914-100-34 | PLATE MCL3 | 5-13119 TO 09 RECT | | 1 | |
| 45 | 4463-701-410 | BOSS SUPPORT | ABS UBE KJC V-2 PUT | | 1 | |
| 44 | 4543-702-80 | SHIELD CASE VIDEO | STPE-1 TO 306 | | 1 | |
| 43 | 3903-700-210 | BARRIER VIDEO | PVC SHEET TO B BLK | | 1 | |
| 42 | 3003-707-81 | PCB VIDEO | 1611 52070 | | 1 | |
| 41 | 6613-711-41 | BRACKET STAND | 95BHC-1 T1.0 | | 1 | |
| 40 | 6604-117-410 | HOLDER CEMENT R | SPC-1 TO B | | 2 | |
| 39 | 7108-126-041 | SCREW TAP PH | 25-3X6 FE FZY | | 1 | |
| 38 | 3541-700-81 | CHASSIS FRAME | 95BHC-1 T1.0 | | 1 | |
| 37 | 6612-707-110 | BRACKET POWER TRANS | 95BHC-1 T1.0 | | 1 | |
| 36 | 7128-540-08 | SCREW TAP TH | 25-4X8 FE FZY | | 1 | |
| 35 | 2889-247-01 | TRANS POWER | P120V 2 25V DC | | 1 | |
| 34 | 7128-540-08 | SCREW TAP TH | 25-4X8 FE FZY | | 2 | |
| 33 | 7128-540-08 | SCREW TAP TH | 25-4X8 FE FZY | | 2 | |
| 32 | 7048-140-08 | SCREW RH | 1-M4X8 FE FZY | | 1 | |
| 31 | 8301-700-110 | STAND TOP | HPS VO BEE | | 1 | |
| 30 | 1148-230-121 | SCREW TAP RH | 25-4X12 FE FZY | | 1 | |
| 29 | 7128-540-08 | SCREW TAP TH | 25-4X8 FE FZY | | 1 | |
| 28 | 7148-530-06 | SCREW TAP RH | 25-3X6 FE FZY | | 1 | |
| 27 | 7148-530-06 | SCREW TAP RH | 25-3X6 FE FZY | | 1 | |
| 26 | 5683-700-71 | HEAT SINK 3 M.P.S | A0005-H14 TO 3 | | 1 | |
| 25 | 3004-707-01 | PCB POWER | 07180358 | | 1 | |
| 24 | 6674-102-21 | SPRING EARTH | SWRM PRO 8 TZW 2 | | 1 | |
| 23 | 3529-702-51 | SWITCH PUSH | SDRBP 17V-31 | | 1 | |
| 22 | 7128-540-01 | SCREW TAP TH | 25-4X10 FE FZY | | 2 | |
| 21 | 5613-109-71 | BRACKET POWER | ABS VO BLK | | 1 | |
| 20 | 2309-110-27 | LED GRN | 5LB-26 00-3 | | 1 | |
| 19 | 7048-130-08 | SCREW RH | 1-M3X8 FE FZY | | 2 | |
| 18 | 7118-540-13 | SCREW TAP PH | 25-4X15 FE FZW | | 1 | |
| 17 | 6614-713-71 | SPRING COIL | SUS-302 WRA PRO 5 | | 1 | |
| 16 | 7623-706-61 | HOLDER POWER | PRO VO BEE | | 1 | |
| 15 | 6603-702-00 | HOLDER CORD | ABS VO BLK 00 | | 1 | |
| 14 | 2496-094-51 | FEEL YOK | DMK-2348L | | 1 | |
| 13 | 2619-122-42 | CRT MONOCHROME | 12INBT 3IN | | 1 | |
| 12 | 7154-101-51 | SCREW TAP RH | 25-2X25 FE FZY | | 4 | |
| 11 | 7248-700-520 | RIVET | ABS HB 1VOR | | 2 | |
| 10 | 7128-540-014 | SCREW TAP RH | 25-4X10 FE FZY | | 1 | |
| 9 | 7201-102-314 | VR ROUND SOL | 185W 20F 3500(MB) | | 1 | |
| 8 | 7201-102-012 | VR ROUND SOL | 185W 20F 3500(MB) | | 1 | |
| 7 | 6613-711-61 | BRACKET VR | 95BHC-1 T1.0 | | 1 | |
| 6 | 5074-700-710 | FOOT | NEOPRENE RUBBER SH | | 3 | |
| 5 | 8301-700-211 | STAND BOTTOM | PRO VO BEE | | 1 | |
| 4 | 7623-707-00 | MOB VR | ABS VO BEE | | 2 | |
| 3 | 7128-540-12 | SCREW TAP TH | 25-4X12 FE FZY | | 2 | |
| 2 | 5614-733-51 | BRACKET MOUNT | 95BHC-1 T1.2 | | 2 | |
| 1 | 5001-825-06 | COVER FRONT | PRO VO BEE 207 222 26 | | 1 | |

REPAIR PARTS LIST

| LOCATION NO. | CODE NO. | DESCRIPTION | REMARK |
|--------------|---------------|-------------------------------|--------|
| | | ASSY-CHASSIS MAIN | |
| RESISTER | | | |
| R201 | 01018-277-472 | R-CARBON;RD 1/4(T) 4.7K-J | |
| R202 | 01018-277-274 | R-CARBON;RD 1/4(T) 270K-J | |
| R203 | 01018-277-183 | R-CARBON;RD 1/4(T) 18K-J | |
| R204 | 01018-277-104 | R-CARBON;RD 1/4(T) 100K-J | |
| R205 | 01018-277-103 | R-CARBON;RD 1/4(T) 10K-J | |
| R206 | 01018-277-473 | R-CARBON;RD 1/4(T) 47K-J | |
| R207 | 01018-277-472 | R-CARBON;RD 1/4(T) 4.7K-J | |
| R208 | 01018-277-183 | R-CARBON;RD 1/4(T) 18K-J | |
| R209 | 01018-277-512 | R-CARBON;RD 1/4(T) 5.1K-J | |
| R210 | 01018-277-223 | R-CARBON;RD 1/4(T) 22K-J | |
| R211 | 01018-277-472 | R-CARBON;RD 1/4(T) 4.7K-J | |
| R212 | 01018-277-472 | R-CARBON;RD 1/4(T) 4.7K-J | |
| R213 | 01018-277-473 | R-CARBON;RD 1/4(T) 47K-J | |
| R215 | 01018-277-104 | R-CARBON;RD 1/4(T) 100K-J | |
| R216 | 01018-277-104 | R-CARBON;RD 1/4(T) 100K-J | |
| R217 | 01018-277-394 | R-CARBON;RD 1/4(T) 390K-J | |
| R219 | 01018-277-472 | R-CARBON;RD 1/4(T) 4.7K-J | |
| R220 | 01018-277-123 | R-CARBON;RD 1/4(T) 12K-J | |
| R221 | 01018-277-123 | R-CARBON;RD 1/4(T) 12K-J | |
| R222 | 01048-275-184 | R-METAL FILM;RM 1/4(T) 180K-J | |
| R223 | 01018-277-824 | R-CARBON;RD 1/4(T) 820K-J | |
| R224 | 01018-277-474 | R-CARBON;RD 1/4(T) 470K-J | |
| R225 | 01018-277-473 | R-CARBON;RD 1/4(T) 47K-J | |
| R226 | 01018-277-474 | R-CARBON;RD 1/4(T) 470K-J | |
| R227 | 01018-277-683 | R-CARBON;RD 1/4(T) 68K-J | |
| R228 | 01048-377-109 | R-METAL FILM;RM 1/2(T) 1-J | |
| R229 | 01018-277-224 | R-CARBON;RD 1/4(T) 220K-J | |
| R230 | 01018-277-563 | R-CARBON;RD 1/4(T) 56K-J | |
| R232 | 01018-377-339 | R-CARBON;RD 1/4(T) 3.3K-J | |
| R233 | 01018-277-154 | R-CARBON;RD 1/4(T) 150K-J | |
| R260 | 01018-377-100 | R-CARBON;RD 1/2(T) 10-J | |
| R261 | 01045-527-820 | R-METAL OXIDE;RS 2P 82-J | |
| R262 | 01045-527-820 | R-METAL OXIDE;RS 2P 82-J | |
| R261 | 01018-277-683 | R-CARBON;RD 1/4(T) 68K-J | |
| R301 | 01018-277-682 | R-CARBON;RD 1/4(T) 6.8K-J | |
| R302 | 01018-277-822 | R-CARBON;RD 1/4(T) 8.2K-J | |
| R303 | 01018-277-823 | R-CARBON;RD 1/4(T) 82K-J | |
| R304 | 01018-277-103 | R-CARBON;RD 1/4(T) 10K-J | |
| R305 | 01018-277-333 | R-CARBON;RD 1/4(T) 33K-J | |
| R306 | 01018-277-122 | R-CARBON;RD 1/4(T) 1.2K-J | |
| R307 | 01018-277-470 | R-CARBON;RD 1/4(T) 47K-J | |
| R308 | 01018-277-563 | R-CARBON;RD 1/4(T) 56K-J | |
| R309 | 01018-277-273 | R-CARBON;RD 1/4(T) 27K-J | |
| R310 | 01018-277-223 | R-CARBON;RD 1/4(T) 22K-J | |
| R311 | 01018-277-563 | R-CARBON;RD 1/4(T) 56K-J | |
| R312 | 01018-277-514 | R-CARBON;RD 1/4(T) 150K-J | |
| R313 | 01018-277-331 | R-CARBON;RD 1/4(T) 330K-J | |
| R314 | 01018-277-272 | R-CARBON;RD 1/4(T) 2.7K-J | |

| LOCATION NO. | CODE NO. | DESCRIPTION | REMARK |
|-------------------|---------------|---------------------------------------|--------|
| C307 | 01505-723-472 | C-POLYESTER;CQ 921M (T) 100V 0.0047-J | |
| C308 | 01608-904-100 | C-ELECTROLYTIC;CE 04W (T) 25V 10M | |
| C309 | 01505-723-393 | C-POLYESTER;CQ 921M (T) 100V 0.039M-J | |
| C311 | 01509-339-500 | C-POLYPROPYLENE;CQ 922M 630V 0.022M-J | |
| C312 | 01609-803-820 | C-ELECTROLYTIC NPHF;CE 04P 50V 8.2M | |
| C315 | 01609-402-140 | C-ELECTROLYTIC ;CE 04W 35V 1000M | |
| C320 | 01519-005-010 | C-M, POLYESTER;CF 922M 1KV 0.01M-K | |
| C321 | 01519-003-090 | C-M, POLYESTER;CF 922M 400V 0.022M-K | |
| C322 | 01609-403-100 | C-ELECTROLYTIC;CE 04W 100V 100M | |
| C323 | | C-CERAMIC HK;CK 45 B 500V 0.01M-K | |
| C361 | 01417-468-222 | C-CERAMIC HK;CK 45 (T) B 500V 2200-K | |
| TRANSISTOR | | | |
| Q201 | 02139-302-747 | TRANSISTOR;KSC 945-Y (T) | |
| Q202 | 02139-302-747 | TRANSISTOR;KSC 945-Y (T) | |
| Q203 | 02139-302-747 | TRANSISTOR;KSC 945-Y (T) | |
| Q204 | 02139-302-747 | TRANSISTOR;KSC 945-Y (T) | |
| Q205 | 02139-302-747 | TRANSISTOR;KSC 945-Y (T) | |
| Q301 | 02139-401-390 | TRANSISTOR;2SD400-F | |
| Q302 | 02159-301-410 | TRANSISTOR;BU406 | |
| Q303 | 02139-103-570 | TRANSISTOR;KSA 614-Y | |
| Q304 | 02149-401-830 | TRANSISTOR;KSD 261-Y | |
| Q305 | 02139-302-747 | TRANSISTOR;KSC 945-Y (T) | |
| Q306 | 02139-302-747 | TRANSISTOR;KSC 945-Y (T) | |
| IC | | | |
| IC201 | 021109-301-50 | IC-COUNTER;TC 4518BP | |
| IC202 | 02119-501-560 | IC-LOGIC;NE555P | |
| IC203 | 02119-101-270 | IC-VERTICAL;TDA1170N | |
| IC204 | 02109-308-520 | IC-MUX;TC 4052BP | |
| IC301 | 02119-101-251 | IC-HORIZONTAL;TDA1180P | |
| IC302 | 02109-308-520 | IC-MUX;TC 4052BP | |
| IC303 | 02119-601-810 | IC-VOLTAGE REGULATOR;UA7805UC | |
| DIODE | | | |
| D201 | 02169-107-410 | DIODE-SWITCHING;1N4148 (T) | |
| D202 | 02169-107-410 | DIODE-SWITCHING;1N4148 (T) | |
| D203 | 02169-107-410 | DIODE-SWITCHING;1N4148 (T) | |
| D204 | 02169-107-410 | DIODE-SWITCHING;1N4148 (T) | |
| D205 | 02169-107-410 | DIODE-SWITCHING;1N4148 (T) | |
| D206 | 02169-107-410 | DIODE;1N4148 | |
| D207 | 02169-201-080 | DIODE;1N4004 (T) | |
| D301 | 02169-206-177 | DIODE;RGP 15J (T) | |
| D302 | 02169-403-097 | DIODE-ZENER;RD7.5EB2 (T) | |
| D303 | 02169-206-177 | DIODE;RGP15J (T) | |
| D304 | 02169-210-517 | DIODE;RGP5040 (T) | |
| D305 | 02169-210-517 | DIODE;RGP5040 (T) | |
| D306 | 02169-206-177 | DIODE;RGP15J (T) | |
| D309 | 02169-206-170 | DIODE;RGP15J | |

| LOCATION NO. | CODE NO. | DESCRIPTION | REMARK |
|--------------|---------------|------------------------------|--------|
| R315 | 01018-277-104 | R-CARBON;RD ¼(T) 100K-J | |
| R316 | 01018-277-222 | R-CARBON;RD ¼(T) 2.2K-J | |
| R317 | 01018-277-683 | R-CARBON;RD ¼(T) 68K-J | |
| R318 | 01018-277-473 | R-CARBON;RD ¼(T) 47K-J | |
| R319 | 01018-277-222 | R-CARBON;RD ¼(T) 2.2K-J | |
| R320 | 01018-277-222 | R-CARBON;RD ¼(T) 2.2K-J | |
| R321 | 01018-277-331 | R-CARBON;RD ¼(T) 330K-J | |
| R322 | 01018-277-271 | R-CARBON;RD ¼(T) 270K-J | |
| R323 | 01018-277-121 | R-CARBON;RD ¼(T) 120K-J | |
| R324 | 01039-787-259 | R-CEMENT WIRE;RW 10H 2.5-J | |
| R325 | 01039-727-479 | R-CEMENT WIRE;RW 10P 4.7-J | |
| R328 | 01018-277-104 | R-CARBON;RD ¼(T) 100K-J | |
| R329 | 01018-277-274 | R-CARBON;RD ¼(T) 270K-J | |
| R330 | 01018-378-104 | R-COMPOSITION;RC ½(T) 100K-K | |
| R331 | 01018-378-104 | R-COMPOSITION;RC ½(T) 100K-K | |
| R332 | 01018-378-104 | R-COMPOSITION;RC ½(T) 100K-K | |
| R333 | 01018-378-104 | R-COMPOSITION;RC ½(T) 100K-K | |
| R360 | 01045-527-330 | R-METAL OXIDE;RS 1P 33-J | |
| R361 | 01018-277-102 | R-CARBON;RD ¼(T) 1K-J | |
| R363 | 01018-277-102 | R-CARBON;RD ¼(T) 1K-J | |
| R366 | 01018-357-221 | R-CARBON;RD ¼(R) 220K-J | |
| R367 | 01018-277-471 | R-CARBON;RD ¼(T) 470-J | |
| | 00509-400-116 | WIRE-SO. DOPPER;TA-0.6 SN | |

CAPACITOR

| | | | |
|------|---------------|--|--|
| C201 | 01608-906-229 | C-ELECTROLYTIC;CE 04W (T) 50V 2.2M | |
| C202 | 01608-906-229 | C-ELECTROLYTIC;CE 04W (T) 50V 2.2M | |
| C204 | 01505-723-822 | C-POLYESTER;CQ 921M (T) 100V 0.0082M-J | |
| C205 | 01509-121-230 | C-POLYESTER;CQ 921M (T) 100V 0.056M-J | |
| C206 | 01505-724-563 | C-POLYESTER;CQ 921M (T) 100V 0.056-K | |
| C208 | 01608-903-221 | C-ELECTROLYTIC;CE 04W (T) 16V 220M | |
| C209 | 01609-402-140 | C-ELECTROLYTIC;CE 04W 35V 1000M | |
| C220 | 01505-723-222 | C-POLYESTER;CQ 921M (T) 100V 0.0022-J | |
| C221 | 01509-121-750 | C-POLYESTER;CQ 921M (T) 100V 0.15M-J | |
| C222 | 01509-121-750 | C-POLYESTER;CQ 921M (T) 100V 0.15M-J | |
| C223 | 01608-904-101 | C-POLYESTER;CQ 921M (T) 100V 0.15M-J | |
| C224 | 01608-904-101 | C-ELECTROLYTIC;CE 04W (T)25V 100M | |
| C225 | 01417-468-331 | C-CERAMIC HK;CK 45 (T) B 500V 330-K | |
| C226 | 01417-318-151 | C-CERAMIC HK;CK 45 (T) B 50V 3.3-K | |
| C227 | 01608-906-339 | C-ELECTROLYTIC;CE 04W (T) 50V 3.3M | |
| C228 | 01509-121-750 | C-POLYESTER;CQ 921M 100V 0.15M-J | |
| C229 | 01609-401-340 | C-ELECTROLYTIC;CE 04W 10V 2200M | |
| C230 | 01608-904-101 | C-ELECTROLYTIC;CE 04W (T) 25V 100M | |
| C231 | 01417-344-104 | C-CERAMIC HK;CK 45 (T) F 50V 0.1M-Z | |
| C260 | 01505-723-104 | C-POLYESTER;CQ 921M (T) 100V 0.1M-J | |
| C270 | 01417-318-151 | C-CERAMIC;CK 45 (T) B 50V 150-K | |
| C301 | 01609-401-490 | C-ELECTROLYTIC;CE 04W 16V 330M | |
| C302 | 01505-723-104 | C-POLYESTER;CQ 921M (T) 100V 0.1M-J | |
| C303 | 01505-723-103 | C-POLYESTER;CQ 921M (T) 100V 0.01M-J | |
| C304 | 01608-906-047 | C-ELECTROLYTIC;CE 04W (T) 50V 0.47M | |
| C305 | 01509-121-300 | C-POLYSTYRENE;CQ 921M 100V 0.22M-J | |
| C306 | 01508-213-372 | C-POLYSTYRENE;CQ 09S 50V 3700-J | |

| LOCATION NO. | CODE NO. | DESCRIPTION | REMARK |
|--------------------------|---------------|--------------------------------------|--------|
| VARIABLE RESISTER | | | |
| VR201 | 01241-122-010 | VR-SEMI;TVP 111 B 250K | |
| VR202 | 01214-108-006 | VR-SEMI;CET 92A B 100K | |
| VR203 | 01214-108-006 | VR-SEMI;CET 92A B 100K | |
| VR204 | 01214-108-006 | VR-SEMI;CET 92A B 100K | |
| VR209 | 01241-108-014 | VR-SEMI;CET 92A B 500K | |
| VR303 | 01246-101-149 | VR-SEMI (SHAFT);SN-8285 B 10K CTS | |
| VR304 | 01241-108-005 | VR-SEMI;CET 92A B 3K | |
| VR305 | 01241-108-005 | VR-SEMI;CET 92A B 3K | |
| VR307 | 01241-108-008 | VR-SEMI;CET 92A B 200K | |
| VR308 | 01241-108-006 | VR-SEMI;CET 92A B 100K | |
| VR309 | 01241-141-005 | VR-SEMI;CET 118C B 2M | |
| VR303A | 05104-706-910 | SHAFT-VR;SKI-201K-332-90KTS | |
| OTHERS | | | |
| L301 | 02449-409-010 | COIL-WIDTH;3.5-18 μ H | |
| L302 | 02449-733-210 | COIL-H LINEARITY;5.0-18.3 μ H | |
| L303 | 02449-733-510 | COIL-H LINEARITY;5.5 μ H | |
| T301 | 02859-127-610 | F.B.T;FMH-1245IL | |
| T302 | 02849-031-710 | TRANS-HORI.DRIVER;16*5.2 M/M, 8.7MH | |
| CN2 | 03054-609-210 | CONNECTOR-DCS ASSY | |
| CN7 | 03054-618-820 | CONNECTOR-PWR ASSY | |
| CN9 | 03054-619-660 | CONNECTOR-SELEC ASSY | |
| CN10 | 03054-641-510 | CONNECTOR-S.C ASSY | |
| CN4 | 03349-062-020 | CONNECTOR-WAFER;5045-03A MOLEX | |
| CN5 | 03349-062-020 | CONNECTOR-WAFER;5045-03A MOLEX | |
| CN6 | 03349-062-020 | CONNECTOR-WAFER;5045-03A MOLEX | |
| H.DY | 03349-106-810 | CONNECTOR-WAFER;5045-02A MOLEX | |
| V.DY | 03349-106-810 | CONNECTOR-WAFER;5045-02A MOLEX | |
| Q302 | 04542-702-810 | SHIELD-FBT;SBC-1 T0.5FT | |
| Q303 | 05683-703-111 | HEATSINK-TR;BSB1-0 T0.8 | |
| | 03914-100-340 | PLATE-MICA;5-B \times 19 T0.09RECT | |
| | 03934-103-120 | INSULATOR-TR;3.8-8D 2-5H N66V-O | |
| | 07048-130-122 | SCREW-RH;+M3+12 FE FZW | |
| | 07208-113-001 | NUT-HEX;1-M3 FE FZY | |
| | 07034-700-770 | WASHER-PLAIN;1D4216 SPC-1 FZY | |
| | 07304-701-110 | WASHER-REC;SBC-1 T1.5NI | |
| | 07318-103-001 | WASHER-SPRING;P13.0 FE FZY | |
| | 03124-788-810 | PIN-GT;14.2MM 2.35PI | |
| | | ASSY-POWER P.C.B | |
| RESISRER | | | |
| R701 | 01018-277-332 | R-CARBON;RD $\frac{1}{4}$ (T) 3.3K-J | |
| R702 | 01018-277-822 | R-CARBON;RD $\frac{1}{4}$ (T) 8.2K-J | |
| R703 | 01018-277-822 | R-CARBON;RD $\frac{1}{4}$ (T) 8.2K-J | |
| R704 | 01018-277-102 | R-CARBON;RD $\frac{1}{4}$ (T) 1K-J | |
| R705 | 01018-277-122 | R-CARBON;RD $\frac{1}{4}$ (T) 1.2K-J | |
| R706 | 01039-927-100 | R-CEMENT WIRE;RD 20P 10-J | |

| LOCATION NO. | CODE NO. | DESCRIPTION | REMARK |
|-----------------------|---------------|---------------------------------------|--------|
| CAPACITOR | | | |
| C701 | 01609-401-970 | C-ELECTROLYTIC;CE 04W 35V 3300M | |
| C702 | 01608-905-479 | C-ELECTROLYTIC;CE 04W (T) 35V 4.7M | |
| C703 | 01505-723-682 | C-POLYESTER;CQ 921M (T) 100V 0.0068-J | |
| SEMICONDUCTORS | | | |
| IC701 | 02119-601-080 | IC-REGULATOR;L123CB | |
| Q701 | 02149-401-440 | TRANSISTOR;TIP42C | |
| D701 | 02169-206-190 | DIODE;RGP30G | |
| D702 | 02169-206-190 | DIODE;RGP30G | |
| D703 | 02169-206-190 | DIODE;RGP30G | |
| D704 | 02169-206-190 | DIODE;RGP30G | |
| LD701 | 02309-110-270 | LED-GRN;SLB-26 GG-3 | |
| LD701A | 03054-619-650 | CONNECTOR-LED ASSY | |
| LD701B | 03344-106-810 | CONNECTOR-WAFER;5045-02A MOLEX | |
| T701 | 02869-290-010 | TRANS-POWER;P-120, S-22(66M) | |
| F700 | 04709-090-010 | FUSE;61S 250V 0.75A U/C SLOW-B | |
| F700A | 03164-700-111 | CLIP-FUSE;PBP3 1/2H 0.4T SN | |
| SW700 | 03529-702-210 | SWITCH-PUSH;EBS 8213V | |
| VR701 | 01241-108-005 | VR-SEMI;CET 92A B 3K | |
| R706A | 03054-619-640 | CONNECTOR-RESISTOR ASSY | |
| R706B | 06604-117-410 | HOLDER-CEMENT RESISTOR;SPC-1 T0.8 | |
| CN7 | 03344-122-010 | CONNECTOR-WAFER;5273-02A MOLEX | |
| | 03124-101-250 | PIN-GT;24MM 235PI | |
| | 03054-810-310 | POWER CORD-AC ASSY | |
| | 00528-732-202 | WIRE-VINYL U/C;1015 # 22 (T) RED | |
| | 06613-709-710 | BRACKET-POWER;ABS VO BLK | |
| | 03124-700-810 | PIN-GT;14.2MM 2.35 PI | |
| | | ASSY-CRT PCB | |
| RESISTER | | | |
| R101 | 01018-277-331 | R-CARBON;RD 1/4 (T) 330-J | |
| R102 | 01018-277-331 | R-CARBON;RD 1/4 (T) 330-J | |
| R103 | 01018-277-331 | R-CARBON;RD 1/4 (T) 330-J | |
| R104 | 01018-277-331 | R-CARBON;RD 1/4 (T) 330-J | |
| R105 | 01018-277-331 | R-CARBON;RD 1/4 (T) 330-J | |
| R106 | 01018-277-331 | R-CARBON;RD 1/4 (T) 330-J | |
| R107 | 01018-277-331 | R-CARBON;RD 1/4 (T) 330-J | |
| R108 | 01018-277-331 | R-CARBON;RD 1/4 (T) 330-J | |
| R109 | 01018-277-331 | R-CARBON;RD 1/4 (T) 330-J | |
| R110 | 01018-277-821 | R-CARBON;RD 1/4 (T) 820-J | |
| R111 | 01018-277-102 | R-CARBON;RD 1/4 (T) 1K-J | |
| R112 | 01018-277-681 | R-CARBON;RD 1/4 (T) 680-J | |
| R113 | 01018-277-331 | R-CARBON;RD 1/4 (T) 330-J | |
| R114 | 01018-277-331 | R-CARBON;RD 1/4 (T) 330-J | |
| R115 | 01018-277-331 | R-CARBON;RD 1/4 (T) 330-J | |
| R116 | 01018-277-331 | R-CARBON;RD 1/4 (T) 330-J | |
| R117 | 01018-277-331 | R-CARBON;RD 1/4 (T) 330-J | |
| R118 | 01018-277-331 | R-CARBON;RD 1/4 (T) 330-J | |
| R119 | 01018-277-331 | R-CARBON;RD 1/4 (T) 330-J | |

| LOCATION NO. | CODE NO. | DESCRIPTION | REMARK |
|-------------------|---------------|--|--------|
| R120 | 01018-277-152 | R-CARBON;RD $\frac{1}{4}$ (T) 1.5K-J | |
| R121 | 01018-277-331 | R-CARBON;RD $\frac{1}{4}$ (T) 330-J | |
| R122 | 01018-277-681 | R-CARBON;RD $\frac{1}{4}$ (T) 680-J | |
| R123 | 01018-277-102 | R-CARBON;RD $\frac{1}{4}$ (T) 1K-J | |
| R124 | 01018-277-223 | R-CARBON;RD $\frac{1}{4}$ (T) 22K-J | |
| R125 | 01045-527-122 | R-METAL OXIDE;RS 2P 1.2K | |
| R126 | 01045-527-121 | R-CARBON;RD $\frac{1}{4}$ (T) 120-J | |
| R127 | 01028-378-221 | R-COMPOSITION;RC $\frac{1}{2}$ (T) 220-J | |
| R129 | 01028-378-391 | R-COMPOSITION;RC $\frac{1}{2}$ (T) 39-K | |
| CAPACITOR | | | |
| C103 | 01417-344-104 | C-CERAMIC HK;CK45 (T) F 50V 0.1M-Z | |
| C104 | 01608-903-470 | C-ELECTROLYTIC;CE04W (T) 16V 47M | |
| C105 | 01609-403-090 | C-ELECTROLYTIC;CE04W (T) 100V 47M | |
| C106 | 01608-906-109 | C-ELECTROLYTIC;CE04W (T) 50V 1M | |
| C108 | 01608-903-470 | C-ELECTROLYTIC;CE04W (T) 16V 47M | |
| C110 | 01419-106-470 | C-CERAMIC HK;CK45 E 500V 0.1M-P | |
| TRANSISTOR | | | |
| Q101 | 02139-302-747 | TRANSISTOR;KSC 945-Y (T) | |
| Q102 | 02139-302-747 | TRANSISTOR;KSC 945-Y (T) | |
| Q103 | 02139-302-747 | TRANSISTOR;KSC 945-Y (T) | |
| Q104 | 02139-303-220 | TRANSISTOR;2SC 2228A-D | |
| Q105 | 02139-302-747 | TRANSISTOR;KSC 945-Y (T) | |
| IC | | | |
| IC101 | 02109-410-010 | IC-PROM;TBP28L22N (NON-MASKING) | |
| IC102 | 02109-101-880 | IC-TTL;SN74LS07 | |
| DIODE | | | |
| D101 | 02169-107-410 | DIODE-SWITCHING;1N4148 (T) | |
| D102 | 02169-403-730 | DIODE-ZENER;RD 6.8 EB3 (T) | |
| D103 | 02169-403-690 | DIODE-ZENER;RD 6.8 EB1 | |
| D104 | 02169-403-690 | DIODE-ZENER;RD 6.8 EB1 | |
| D150 | 02169-107-410 | DIODE-SWITCHING;1N4148 (T) | |
| OTHERS | | | |
| S1 | 02029-010-010 | LAMP-NEON;DMS 90-130V DC | |
| S3 | 04569-001-010 | SPARK-GAP;Ag20F 1000-1 +/-250V | |
| S4 | 02029-010-010 | LAMP-NEON;DMS 90-130V DC | |
| S5 | 02029-010-010 | LAMP-NEON;DMS 90-130V DC | |
| L101 | 02429-827-017 | COIL-PEAKING;4.7H(T) | |
| | 03359-018-010 | SOCKET-CRT;CY4811 OR PBTP UL | |
| CN1 | 03349-062-050 | CONNECTOR-WAFER;5045-06A MOLEX | |
| CN2 | 03344-106-920 | CONNECTOR-WAFER;5045-04A MOLEX | |
| CN4 | 03054-620-020 | CONNECTOR-SCREEN ASSY | |
| CONT | 03349-062-020 | CONNECTOR-WAFER;5045-03A MOLEX | |

| LOCATION NO. | CODE NO. | DESCRIPTION | REMARK |
|---------------------------------|---------------|---|--------|
| ASSY-SINE CONTROL R.C.B. | | | |
| R364 | 01028-327-101 | R-CARBON;RD ½P 100-J | |
| R365 | 01028-277-152 | R-CARBON;RD ½P 1.5K-J | |
| C360 | 01509-339-450 | C-POLYPROPYLENE;CQ922M | |
| Q309 | 02149-301-430 | TANSISTOR;KSC 1008-Y | |
| D307 | 02169-107-410 | DIODE-SWITCHING;1N4148 (T) | |
| CN10 | 03344-124-910 | CONNECT-WAFER;5045-06A MOLEX | |
| RL300 | 04724-102-010 | RELAY;G2V-2 12V DC (DMRON) | |
| C362 | 01502-554-392 | C-POLYPROPYLENE;CQ 922M 630V 0.003μF-K | |
| ASSY-D.Y. | | | |
| R299 | 01028-378-221 | R-COMPOSITION;RC ½ (T) 220-K | |
| | 02439-054-210 | DEFL-YOKE;DMK-1294EL | |
| H-DY | 03054-619-620 | CONNECTOR-H.DY ASSY | |
| V-DY | 03054-619-630 | CONNECTOR-V.DY ASSY | |
| ASSY SIGNAL CABLE | | | |
| | 03054-401-310 | CABLE-SIGNAL ASSY | |
| SUGNAL | 06634-704-210 | CLAMP-CABLE;A1050S H14 T0.8 | |
| ASSY-CONTROL | | | |
| VR101 | 01201-102-011 | VR-ROUN SGL;18SN 20F E1K (M8) | |
| VR308 | 01201-102-012 | VR-ROUND SGL;18SN 20F B100K (M8) | |
| BRIT | 03054-620-030 | CONNECTOR-BRIGHT ASSY | |
| CONT | 03054-620-040 | CONNECTOR-CONTROL ASSY | |
| | 06613-711-610 | BRACKET-VR;SBHG-1 T1.0 | |
| | 07623-707-010 | KNOB-VR;ABS V0 BGE 00 | |
| | 00742-185-069 | RESIN-ABS;LUCK-AF 303 # 1447 | |
| CRT | | | |
| | 02019-122-620 | CRT-MONOCHROME; 12NBY39N (NDS001) GREEN | |
| | 02019-122-510 | CRT-MONOCHROME-U/C; 12NB/LAN"A" AMBER (DARK PANEL) | |
| PCB | | | |
| | 03003-707-810 | PCB-MAIN/CRT/POWER | |
| | 03003-707-830 | RCB-SIZE CONTROL | |
| GROUND WIRE | | | |
| | 00528-732-200 | WIRE-VINYL U/C;1015 # 22CT | |
| | 03054-222-460 | CONNECTOR 1P ASSY | |
| | 03054-222-480 | CONNECTOR 1P ASSY | |
| | 4554-701-010 | EARTH PLATE;PBS3 SP-H TO. | |
| | 00528-732-200 | WIRE-VINYL U/C;1015 # 22CT | |
| | 03054-222-070 | LUG TERMINAL ASSY | |

| LOCATION NO. | CODE NO. | DESCRIPTION | REMARK |
|-----------------------|--------------------------------|---|--------|
| ASSY-ACCESSORY | | | |
| | 08124-702-710 08654-107-030 | WARRANTY CARD;WHITE PAPER INSTRUCTION CARD;ART PAPER PE-BAG;HDPE T0.02×230×36 | |